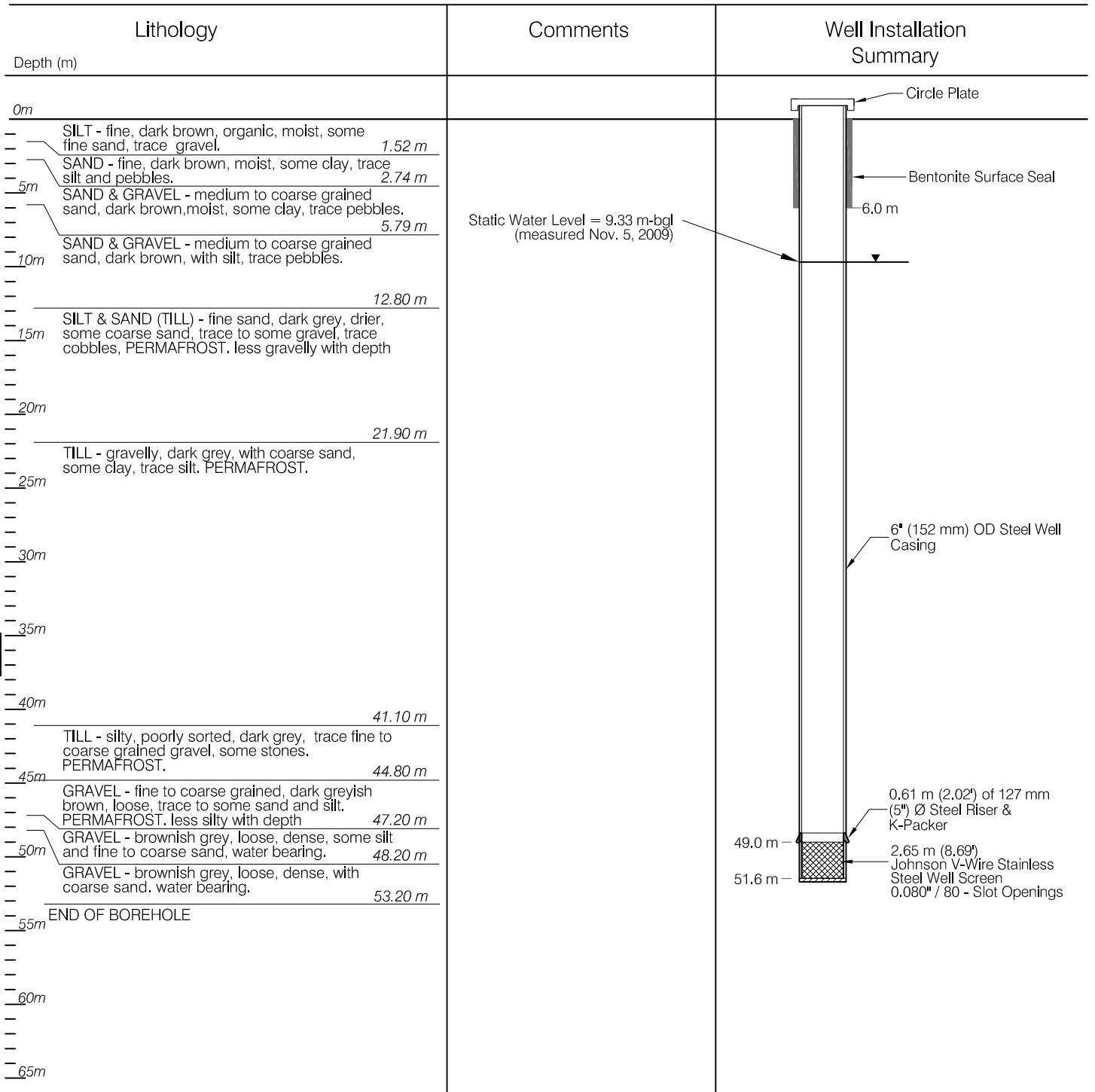


# HYDROGEOLOGIC LOG

PURPOSE OF HOLE: Water Supply Well  
 DRILLING METHOD: Air Rotary  
 DRILLING DATE: 2009/10/28 - 2009/11/02  
 SCREEN INSTALLED: 49.0 - 51.6 m  
 CONTRACTOR: Impact Drilling Ltd.

BOREHOLE NO. WELL KFN-J

CASING STICK UP: 0.66 m above grd.  
 DEPTH TO STATIC: 9.33 m bgs  
 DEPTH TO SCREEN (m): 49.0 m bgs



C:\Whitehorse\Data\0201\Drawings\Burwash\W23101263\_KFN-J Well Completion\W23101263\_KFN-J August 13, 2010 - 8:21am

**LEGEND:**

- ▾ — STATIC WATER LEVEL
- ▒ SCREEN INTERVAL

CLIENT



**KLUANE FIRST NATION - KFN-J WELL COMPLETION  
 BURWASH LANDING, YUKON**

**KFN-J WELL LOG**

**EBA Engineering  
 Consultants Ltd.**



PROJECT NO. W23101263	DWN CB	CKD SKS	REV 0
OFFICE EBA-WHSE	DATE August 13, 2010		

**Figure 3**