

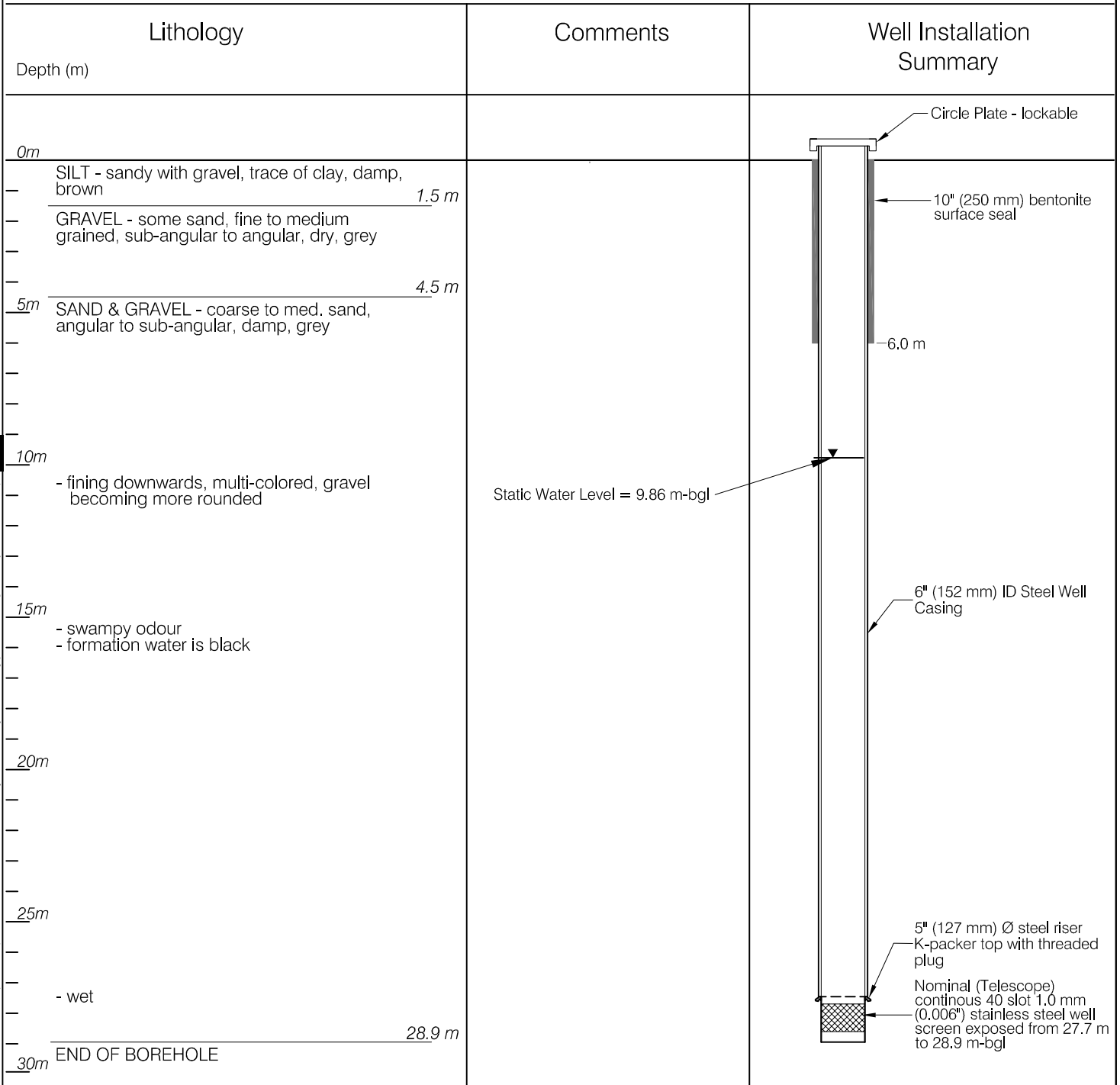
HYDROGEOLOGIC LOG

BOREHOLE NO.

WELL 3125-B

PURPOSE OF HOLE: Water Supply Well
 DRILLING METHOD: Air Rotary
 DRILLING DATE: October 15, 2006
 SCREEN INSTALLED: October 16, 2006
 CONTRACTOR: Double D Drilling Ltd.

CASING STICK UP: 1.0 m -agl.
 DEPTH TO STATIC: 9.86 m-bgl.
 DEPTH TO SCREEN (m): 27.13 m



C:\Whitehorse\Data\0201\Drawings\Beaver Creek\1260028 Water Well Completion Report\1260028 ATB\Figure 1 Well Log_3125-B.dwg [WELL_3125-B] February 15, 2007 - 3:21pm

CLIENT



WELL COMPLETION REPORT
AIRPORT TERMINAL BUILDING - BEAVER CREEK, YT.

WELL LOG 3125-B

EBA Engineering Consultants Ltd.



| | | | |
|------------------------|-------------------------|---------------|----------|
| PROJECT NO. 1260028 | DWN JSB | CKD TK/BEP | REV 0 |
| OFFICE EBA-WHSE | DATE January 9, 2007 | | |

Figure 3