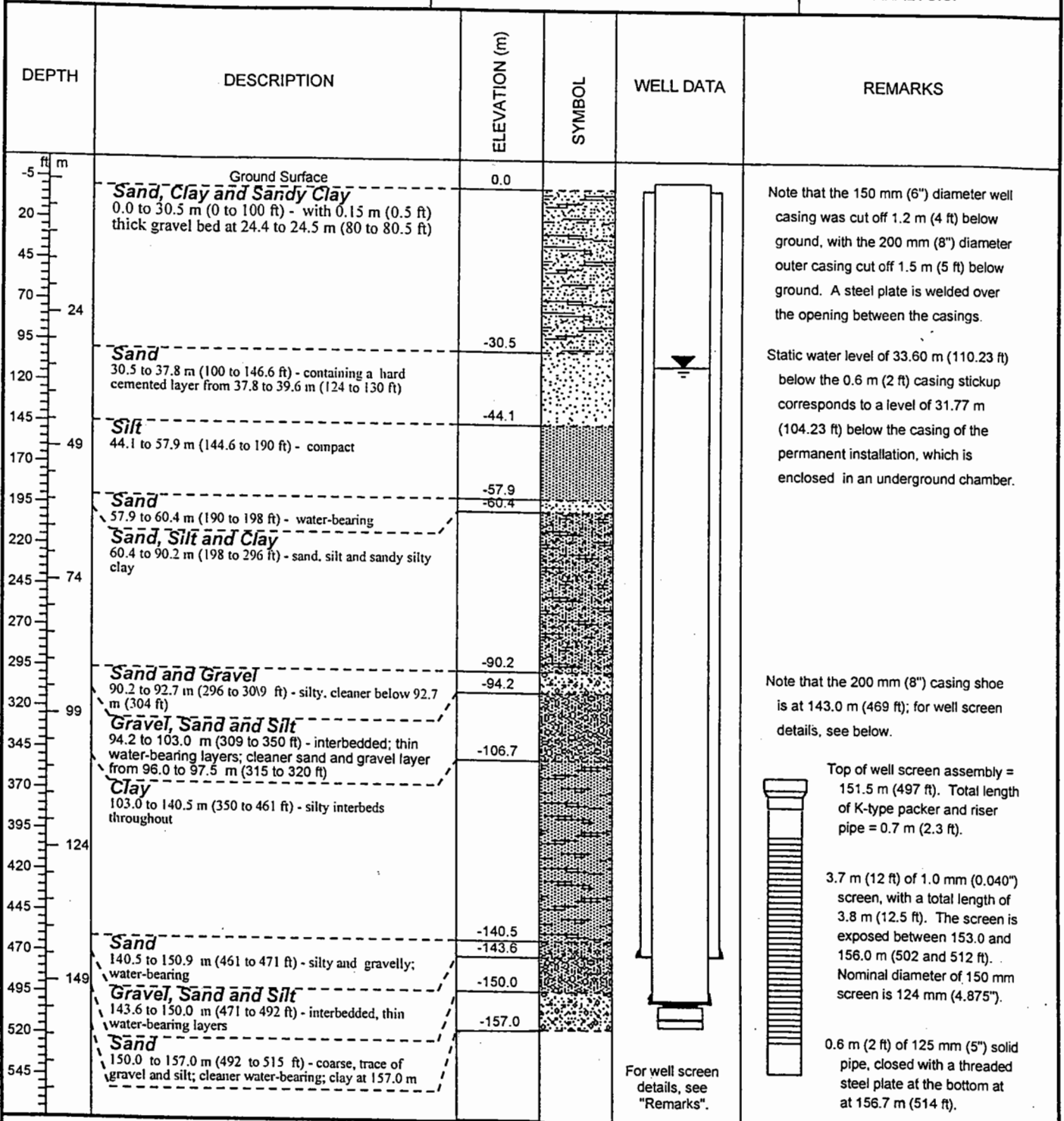


PROJECT: YTG - Hootalinqua Firehall Well	CASING STICKUP: 0.6 m (2 ft)	WELL NO: 1-02
PHCL PROJECT NO: C730101	STATIC WATER LEVEL: 33.0 m (108.23 ft) bgs	PUMPING TEST: Yes
LOCATION: North of Whitehorse	COMPLETION DEPTH: 156.7 m (514 ft)	WATER ANALYSIS: Yes



CONTRACTOR: Cathway Water Resources	DATE: Mar-Aug/2002	PACIFIC HYDROLOGY CONSULTANTS LTD. Consulting Hydrogeologists Suite 201, 1537 West 8th Avenue VANCOUVER, B.C. Canada V6J 1T5 Telephone: (604) 730-6990
DRILLING METHOD: Cable Tool	BY: rt	
PAGE: 1 of 2	FIGURE: 3	