

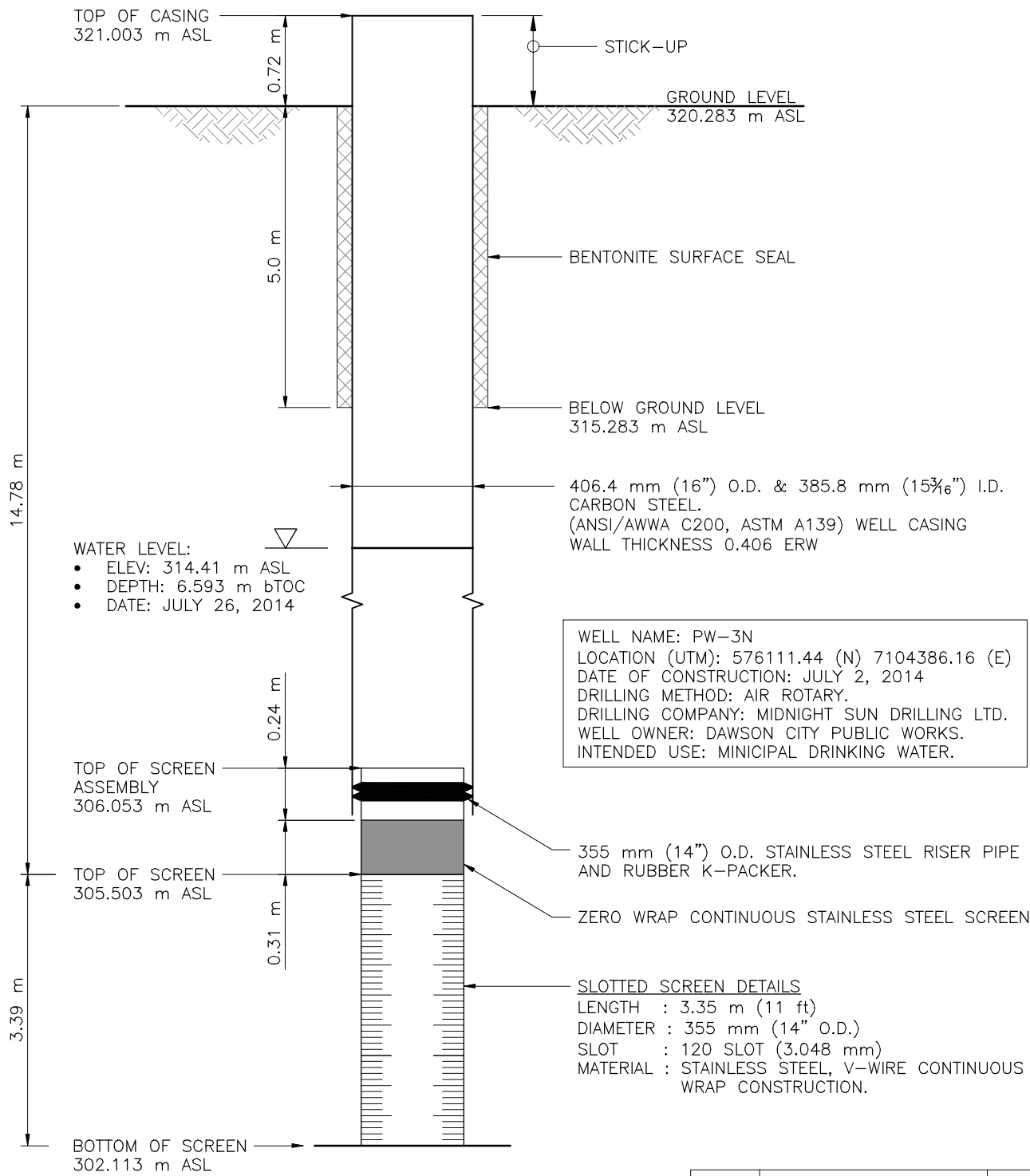
PROJECT: City of Dawson Production Wells		CLIENT: City of Dawson		HOLE NO: <b>PW-3N</b>			
LOCATION: Dawson City UTM N 576,111.4 E 7,104,386.2				PROJECT NO.: 5140579			
CONTRACTOR: MSD			METHOD: Air Rotary		GROUND ELEVATION (m): 320.28		
BACKFILL TYPE		■ BENTONITE	□ GRAVEL	▨ SLOUGH	◼ GROUT		
		◻ CUTTINGS	□ SAND				
DEPTH (m)	SOIL SYMBOL	SOIL DESCRIPTION			WELL INSTALLATION	COMMENTS	ELEVATION (m)
0	[Cross-hatch symbol]	TOPSOIL, sandy loam, light brown, rootlets.			[Well casing symbol]		320
1	[Cross-hatch symbol]	FILL, fine sand and gravel with trace silt. Light brown, sub-angular and coarse sand.			[Well casing symbol]		319
2	[Cross-hatch symbol]				[Well casing symbol]		318
3	[Cross-hatch symbol]				[Well casing symbol]		317
4	[Cross-hatch symbol]				[Well casing symbol]		316
5	[Cross-hatch symbol]	Fine SAND and GRAVEL with trace silt. Light brown, becoming wet at 6.0 m.			[Well casing symbol]		315
6	[Cross-hatch symbol]	SAND and GRAVEL, trace silt with occasional cobbles present. sub-angular to sub-rounded.			[Well casing symbol]		314
7	[Cross-hatch symbol]				[Well casing symbol]		313
8	[Cross-hatch symbol]				[Well casing symbol]		312
9	[Cross-hatch symbol]				[Well casing symbol]		311
10	[Cross-hatch symbol]				[Well casing symbol]		310
11	[Cross-hatch symbol]	GRAVEL, light grey to brown, angular to sub-angular.			[Well casing symbol]		309
12	[Cross-hatch symbol]				[Well casing symbol]		308
13	[Cross-hatch symbol]				[Well casing symbol]		307
14	[Cross-hatch symbol]				[Well casing symbol]		306
15	[Cross-hatch symbol]				[Well casing symbol]		305
16	[Cross-hatch symbol]				[Well casing symbol]		304
17	[Cross-hatch symbol]				[Well casing symbol]		303
18	[Cross-hatch symbol]				[Well casing symbol]		302
19	[Cross-hatch symbol]	BEDROCK, greenstone and schist rock chips observed. end of hole			[Well casing symbol]		301
20	[Cross-hatch symbol]				[Well casing symbol]		300
21	[Cross-hatch symbol]				[Well casing symbol]		299
22	[Cross-hatch symbol]				[Well casing symbol]		299

BOREHOLE AND WELL LOG GINT-2014-08-19-DCPW BOREHOLE LOGS\_CL-5140579.GPJ AECOM\_BBY\_2011.GDT 16/09/14

**Well Screen Completion Details:**  
 Length: 3.35 m (11 ft)  
 Diameter: 355 mm (14") OD  
 Slot: 120-slot (3.048 mm) open area  
 Material: Stainless Steel, v-wire continuous wrap construction  
 See as-builts for additional details.



LOGGED BY:	[Redacted]	COMPLETION DEPTH: 18.17 m
REVIEWED BY:	[Redacted]	COMPLETION DATE: 14/07/14
PROJECT ENGINEER:	[Redacted]	Page 1 of 1



WELL NAME: PW-3N  
 LOCATION (UTM): 576111.44 (N) 7104386.16 (E)  
 DATE OF CONSTRUCTION: JULY 2, 2014  
 DRILLING METHOD: AIR ROTARY.  
 DRILLING COMPANY: MIDNIGHT SUN DRILLING LTD.  
 WELL OWNER: DAWSON CITY PUBLIC WORKS.  
 INTENDED USE: MINICIPAL DRINKING WATER.

A	ISSUED FOR _____	YY-MM-DD
ISSUE	DESCRIPTION	DATE

M:\PROJ\5140579\Drawing\Well-Construction-8.5X11.dwg 1/9/2012 11:49 AM

**Notes:**

- ID - INNER DIAMETER
- BTOC - BELOW TOP OF CASING
- ASL - ABOVE SEA LEVEL
- OD - OUTER DIAMETER

Client:



## DAWSON CITY GROUNDWATER WELL CONSTRUCTION PW-3N

Project No.:	Drawing No.
5140579.00	103

Design	Drawn:	Reviewed:	Scale:	Date:
-	-	-	NTS	14-08-08

**MH**  
**MORRISON HERSHFIELD**

Suite 310, 4321 Still Creek Dr,  
Burnaby, BC V5C 6S7  
www.morrisonhershfield.com  
Tel: 604 454 0402 Fax: 604 454 0403