



**LORAX**  
ENVIRONMENTAL

MW14-05A / BH11 / CFD-0444

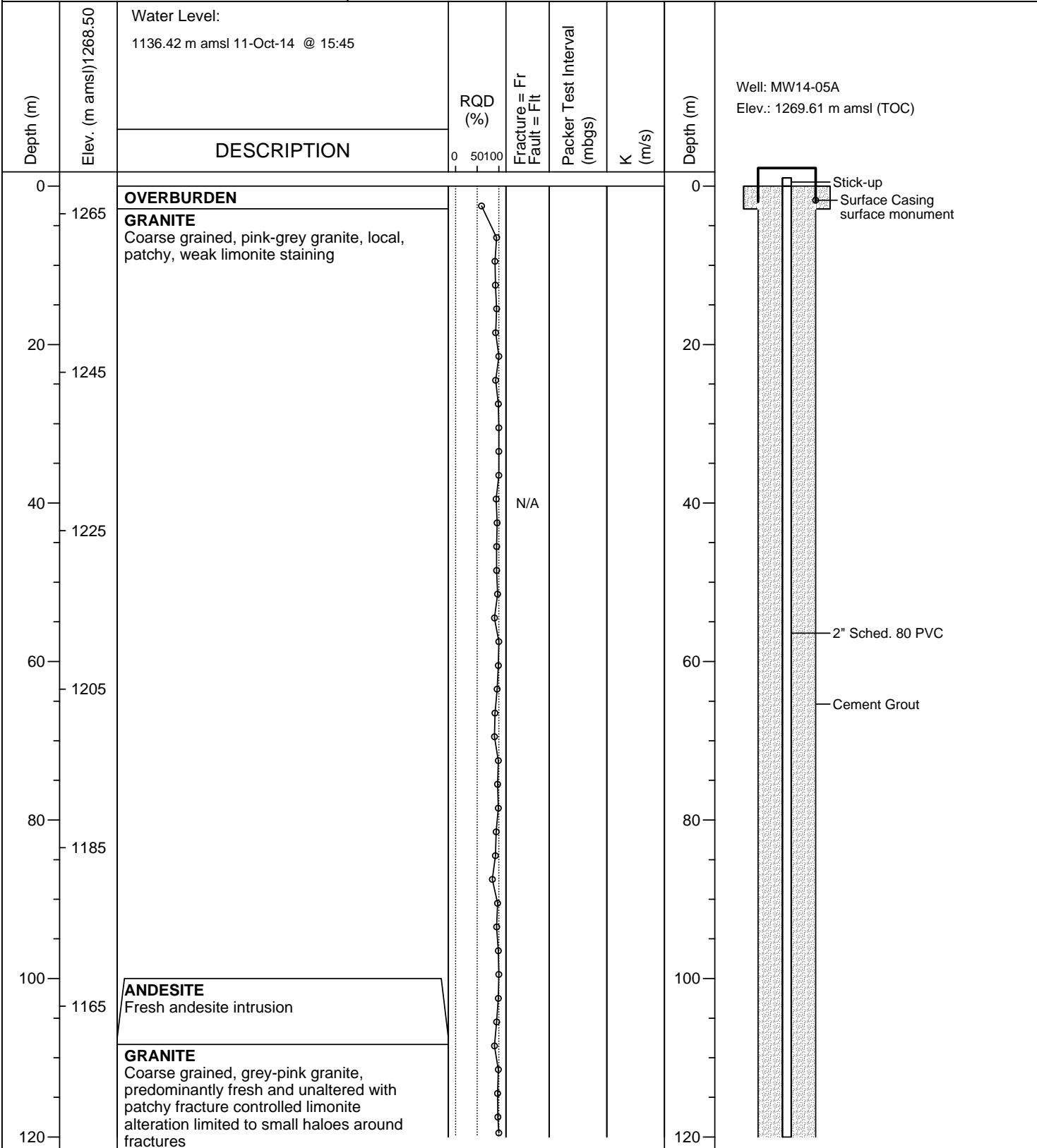
(Page 1 of 2)



Drilling Started : Sep 12, 2014  
 Install Completed : Sep 17, 2014  
 Drilling Method : Diamond / HQ  
 Drilling Company : CYR Drilling Ltd.  
 Supervised By : [REDACTED]

Northing Coord. : 6,972,997.94  
 Easting Coord. : 579,708.14  
 Ground Surface : 1268.50 m amsl  
 Logged By : Kaminak  
 Checked By : [REDACTED]

Coffee Creek Gold  
 Project #: A362-4



03-04-2016 P:\A362-4 (Coffee Gold Project - Hydrogeology)\Data\BH Logs\Quicklog\2014\MW14-05A.bor



**LORAX**  
ENVIRONMENTAL

MW14-05A / BH11 / CFD-0444

(Page 2 of 2)

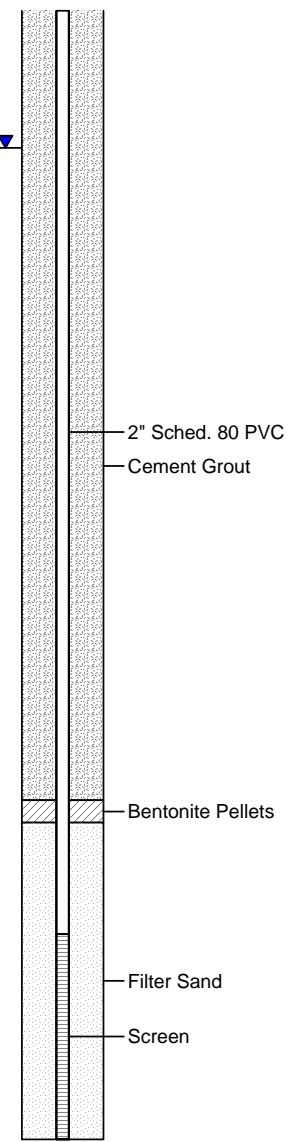


Drilling Started : Sep 12, 2014  
 Install Completed : Sep 17, 2014  
 Drilling Method : Diamond / HQ  
 Drilling Company : CYR Drilling Ltd.  
 Supervised By : [REDACTED]

Northing Coord. : 6,972,997.94  
 Easting Coord. : 579,708.14  
 Ground Surface : 1268.50 m amsl  
 Logged By : Kaminak  
 Checked By : [REDACTED]

Coffee Creek Gold  
 Project #: A362-4

Depth (m)	Elev. (m amsl) 1268.50	DESCRIPTION	RQD (%)		Fracture = Fr Fault = FIt	Packer Test Interval (mbgs)	K (m/s)	Depth (m)
			0	50				
		Water Level: 1136.42 m amsl 11-Oct-14 @ 15:45						Well: MW14-05A Elev.: 1269.61 m amsl (TOC)
120	1145					111.3 - 140.0	1	
140	1125				N/A			
160	1105	Weak zone; weakly oxidised and limonite altered granite 166.6 to 170.7 m				156.3 - 179.0	No Flow	
180	1085	Leucocratic granite with weak patchy limonite and clay alteration 170.7 to 178.1 m Zone, moderately oxidised and limonite altered, fracture controlled limonite and clay alteration 178.1 to 182.7 m				156.3 - 220.5	1E-09	
200	1065	Coarse grained grey-pink granite 182.7 to 183.7 m Weak zone, fracture controlled limonite with weak to moderate oxidation 183.7 to 185.5 m Coarse grained granite with patchy replacement of feldspars by clay and chlorite 185.5 to 221 m				183.3 - 200.0	3E-09	
220	1045	EOH @ 220.5 m N/A: Borehole not logged for structure 1. Packer test performed in unsaturated zone; test analysis is not valid.				201.3 - 220.5	1e-09	
240								



03-04-2016 P:\A362-4 (Coffee Gold Project - Hydrogeology)\Data\BH Logs\Quicklog\2014\MW14-05A.bor