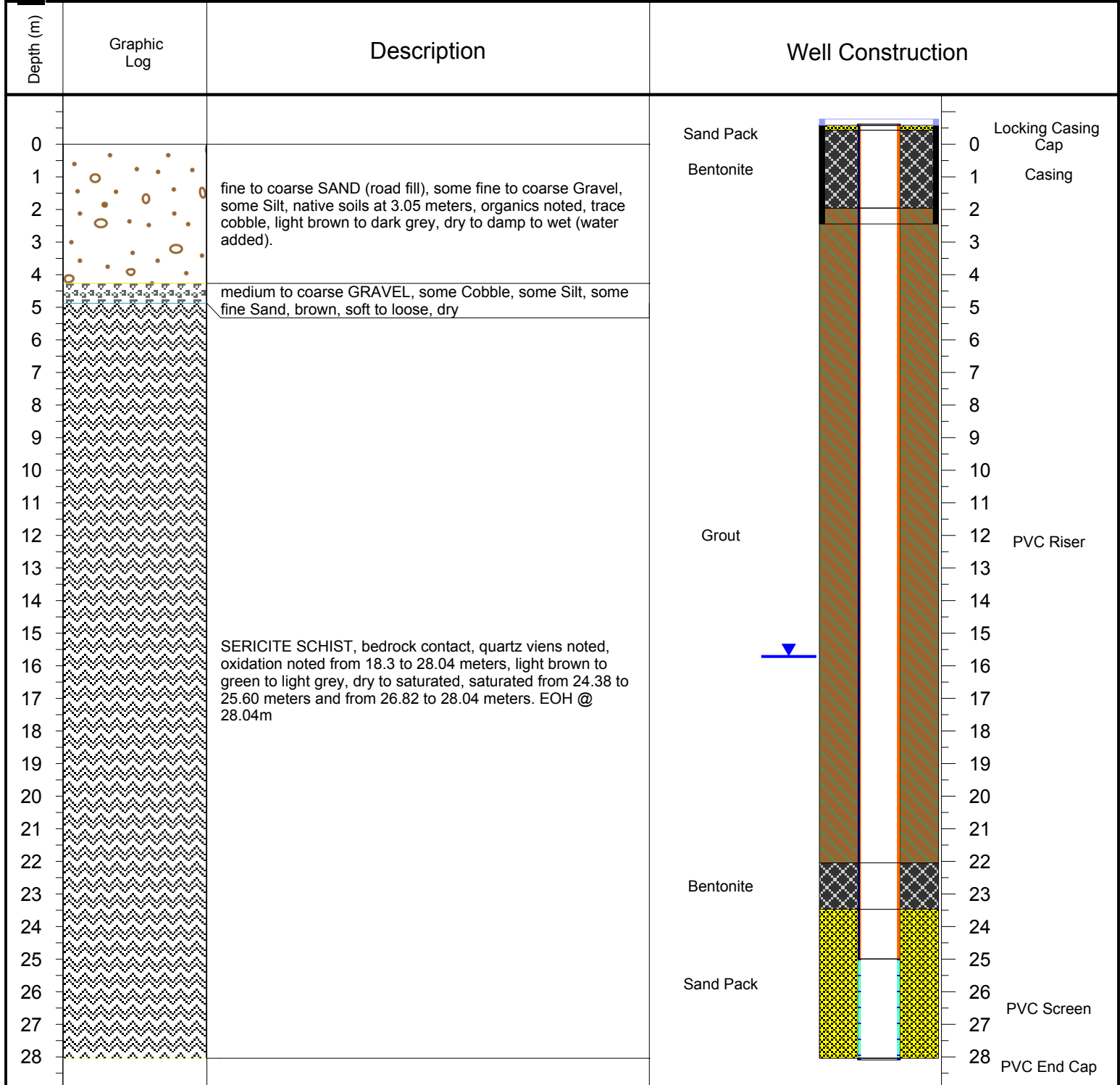




PROJECT: <b>ERDC Site Wide Monitoring Plan (13 002-4)</b>	BORING ID: <b>KAR13-013</b>	
	WELL ID: <b>Galkeno 300 (Completed)</b>	
	NORTHING: <b>7088738</b>	EASTING: <b>482680</b>
	GROUND SURFACE ELEV. (masl): <b>1099</b>	TOC ELEVATION (m ags): <b>0.58</b>
	TOTAL DEPTH (m): <b>28.04</b>	WATER DEPTH (m bgs): <b>15.71</b>
LOGGED BY: 	SAMPLING METHOD: <b>2 Feet (0.61 m) Continuous Sampling</b>	DATE STARTED: <b>September 3, 2013</b>
		DATE COMPLETED: <b>September 4, 2013</b>



NOTES: Wells are 2 inches in diameter.  
EOH @ 28.04m.