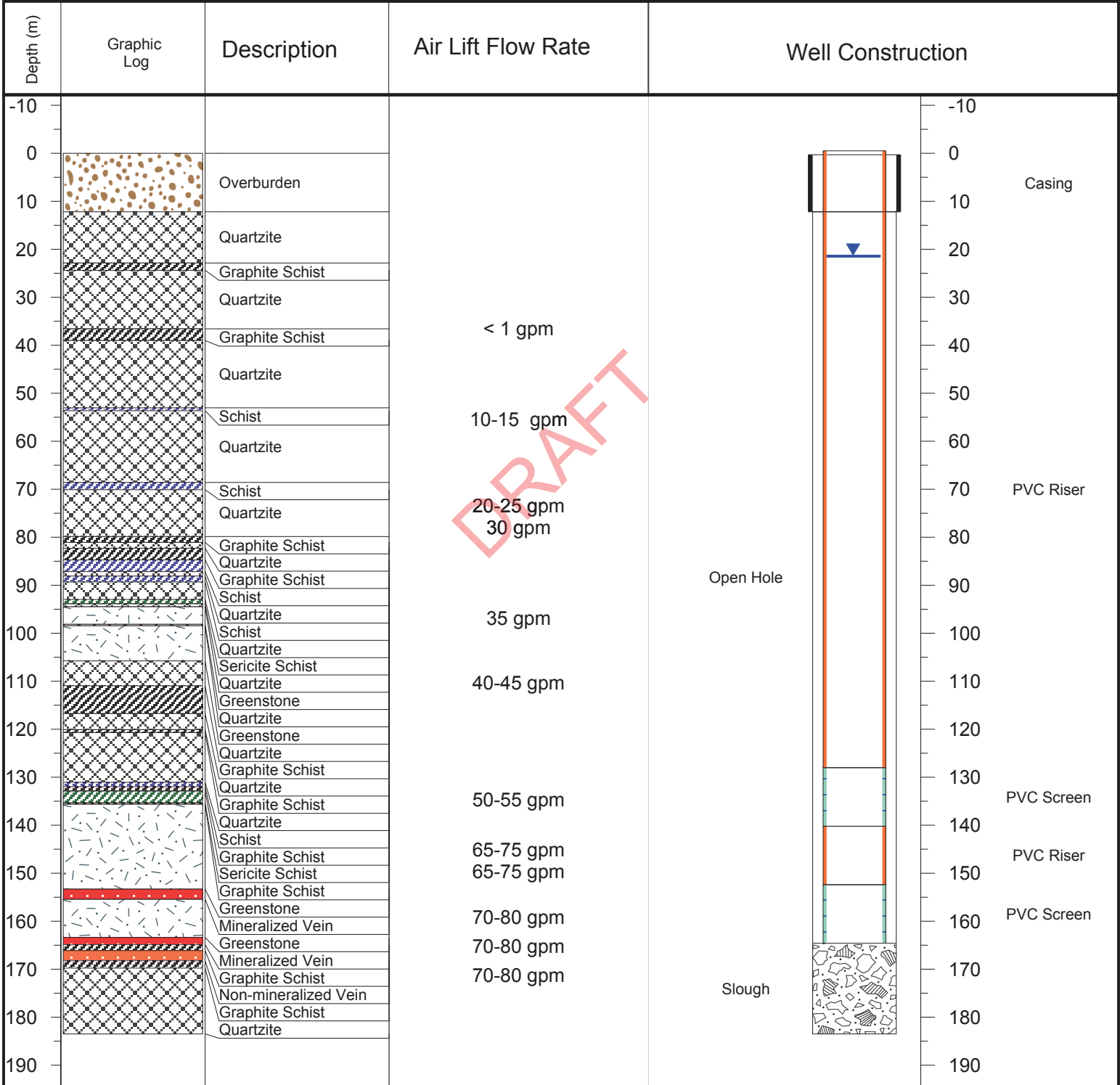




PROJECT: ERDC Site Wide Monitoring Plan (13 002-04)	WELL ID: KAR13001 (FM-1)	
LOCATION: Keno Hills Silver District (KHSD)	WELL MATERIAL: Christal Zone	
DRILLING CONTRACTOR: Access Consulting Group	NORTHING: 7086562.16	EASTING: 483854.14
DRILLING EQUIPMENT: Midnight Sun Drilling Inc.	GROUND SURFACE ELEV. (masl): 913.1	TOC ELEVATION (m ags): 0.5
DRILLING METHOD: Air Rotary	TOTAL DEPTH (m): 182.3	WATER DEPTH (m bgs): 21.431
LOGGED BY: MR/LF	SAMPLING METHOD: Logged by major lithology	DATE STARTED: August 22, 2013
		DATE COMPLETED: August 24, 2013



DRAFT

NOTES:

Overburden Borehole Diameter: 7 3/8"
Bedrock Borehole Diameter: 6"