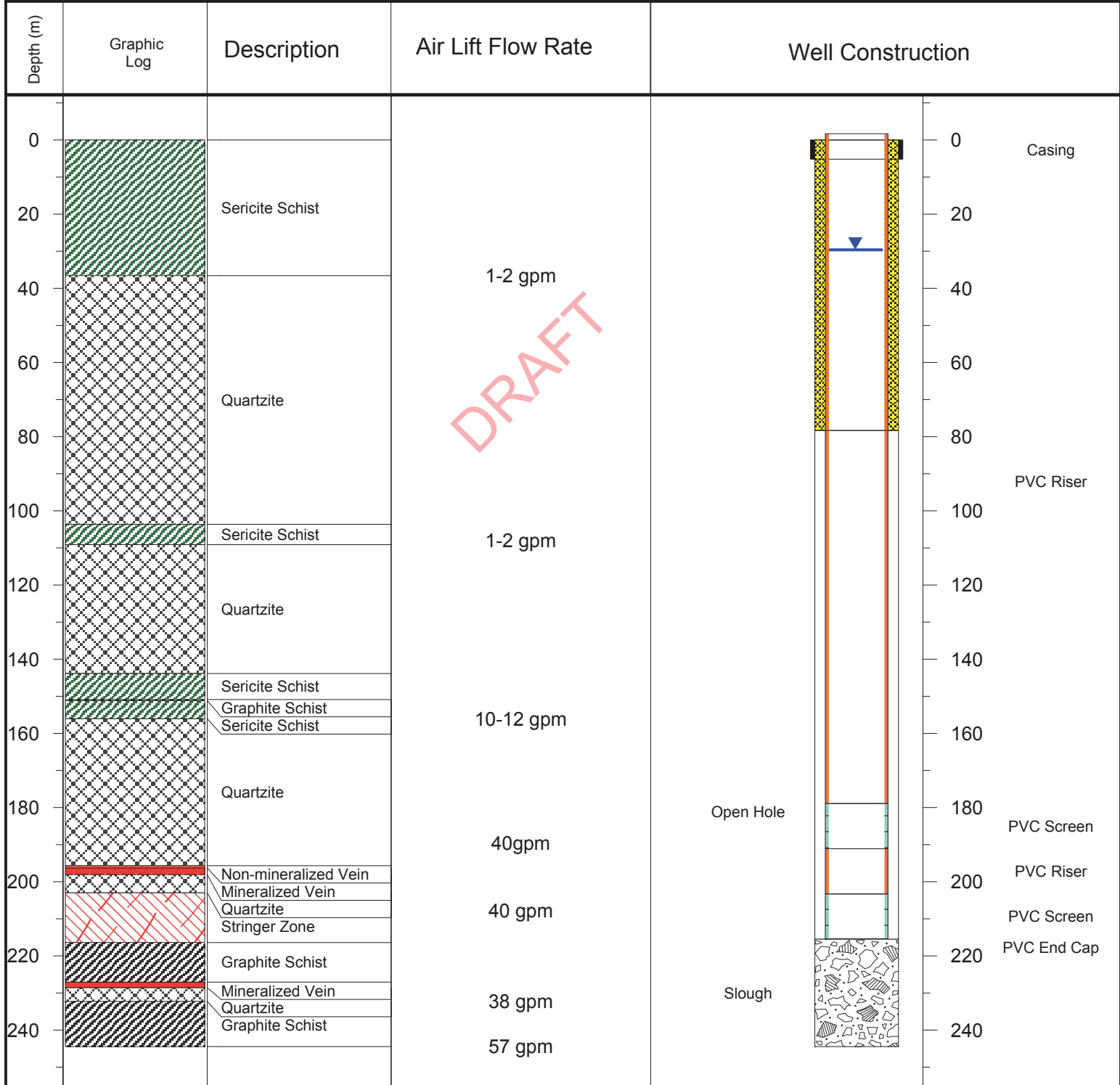




PROJECT: ERDC Site Wide Monitoring Plan (13 002-04)	WELL ID: KAR13002 (FM-2)	
LOCATION: Keno Hills Silver District (KHSD)	WELL MATERIAL: Lightning Zone	
DRILLING CONTRACTOR: Access Consulting Group	NORTHING: 7086770.45	EASTING: 484025.71
DRILLING EQUIPMENT: Midnight Sun Drilling Inc.	GROUND SURFACE ELEV. (masl): 912.23	TOC ELEVATION (m ags): 1.68
DRILLING METHOD: Air Rotary	TOTAL DEPTH (m): 244.4	WATER DEPTH (m bgs): 29.615
LOGGED BY: MR/EB	SAMPLING METHOD: Logged by major lithology	DATE STARTED: August 26, 2013
		DATE COMPLETED: August 28, 2013



DRAFT

NOTES:

Overburden Borehole Diameter: 7 3/8"
Bedrock Borehole Diameter: 6"