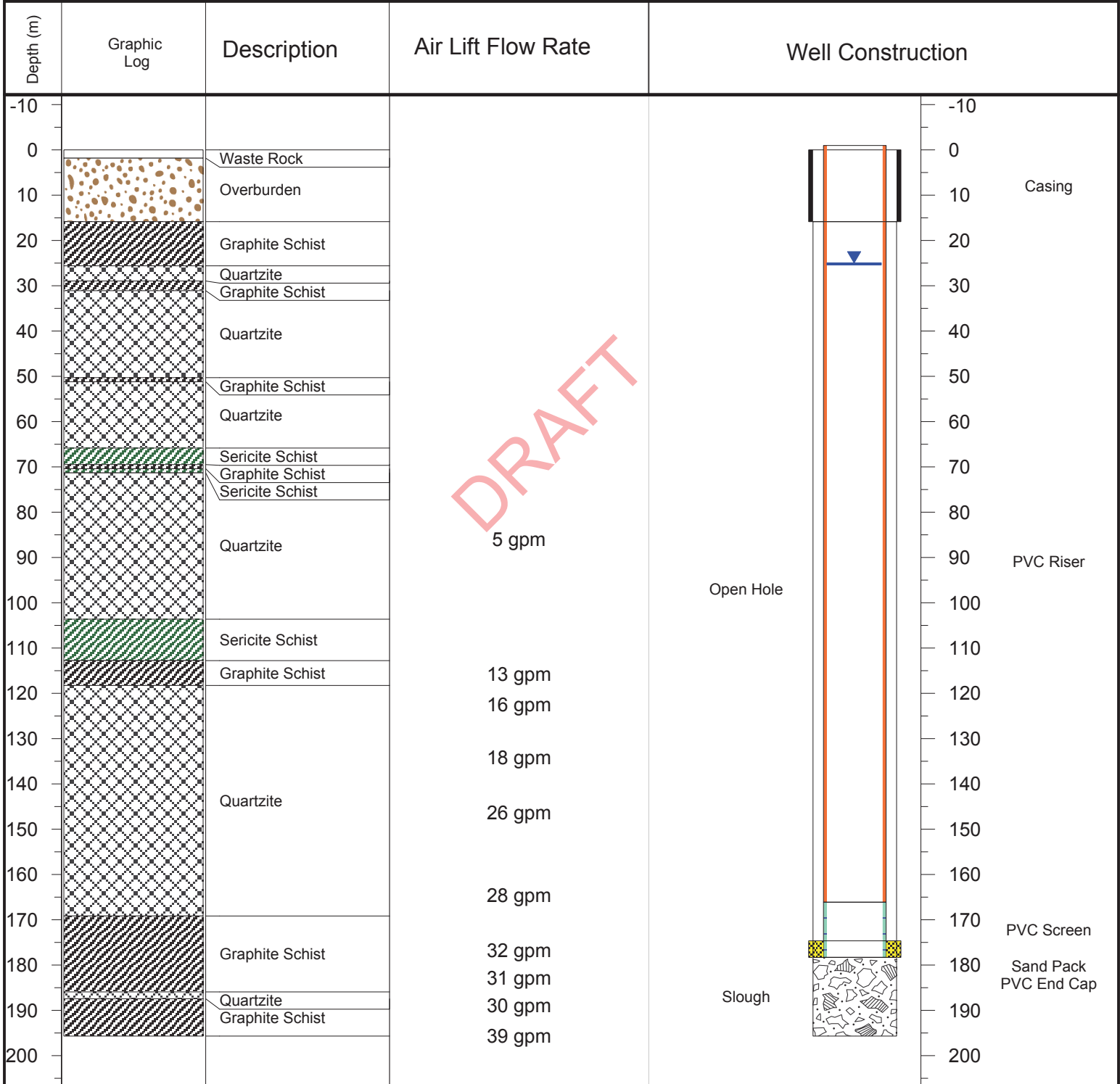




PROJECT: <b>ERDC Site Wide Monitoring Plan (13 002-04)</b>	WELL ID: <b>KAR13016 (FM-3)</b>		
	LOCATION: <b>Keno Hills Silver District (KHSD)</b>		
	WELL MATERIAL: <b>Mill Fault</b>		
	DRILLING CONTRACTOR: <b>Access Consulting Group</b>	NORTHING: <b>7086627.86</b>	EASTING: <b>483910.161</b>
	DRILLING EQUIPMENT: <b>Midnight Sun Drilling Inc.</b>	GROUND SURFACE ELEV. (masl): <b>907.0729</b>	TOC ELEVATION (m ags): <b>0.97</b>
DRILLING METHOD: <b>Air Rotary</b>	TOTAL DEPTH (m): <b>195.7</b>	WATER DEPTH (m bgs): <b>25.197</b>	
LOGGED BY: <b>MR</b>	SAMPLING METHOD: <b>Logged by major lithology</b>	DATE STARTED: <b>September 10, 2013</b>	DATE COMPLETED: <b>September 21, 2013</b>



DRAFT

NOTES:

Overburden Borehole Diameter: 7 3/8"  
 Bedrock Borehole Diameter: 6"