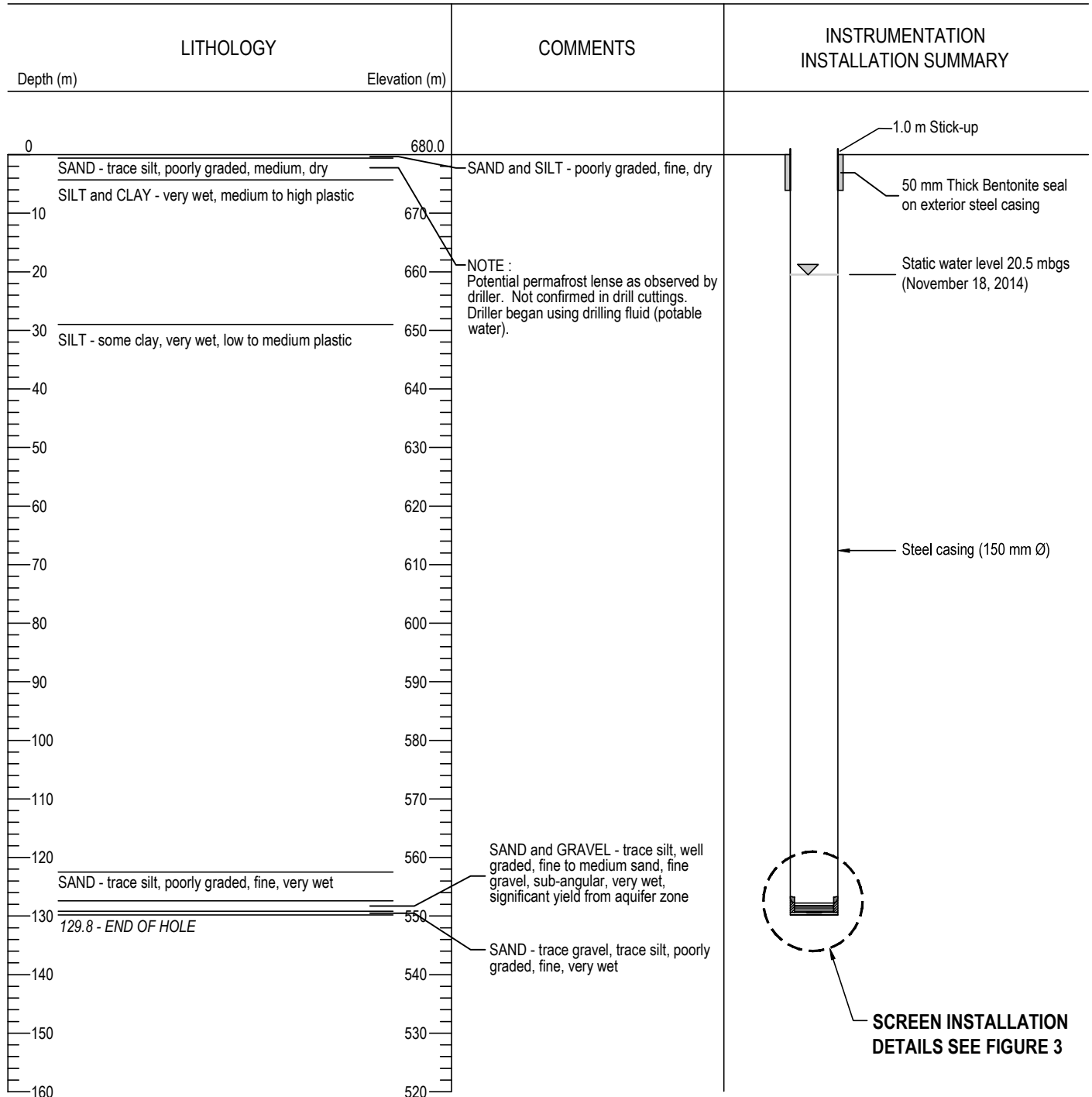



# BOREHOLE LOG

PROJECT NAME: TAKHINI RIVER SUBDIVISION WATER SUPPLY  
 LOCATION: TAKHINI RIVER SUBDIVISION  
 DATE DRILLED: NOVEMBER 13, 2014  
 DRILL TYPE: AIR ROTARY

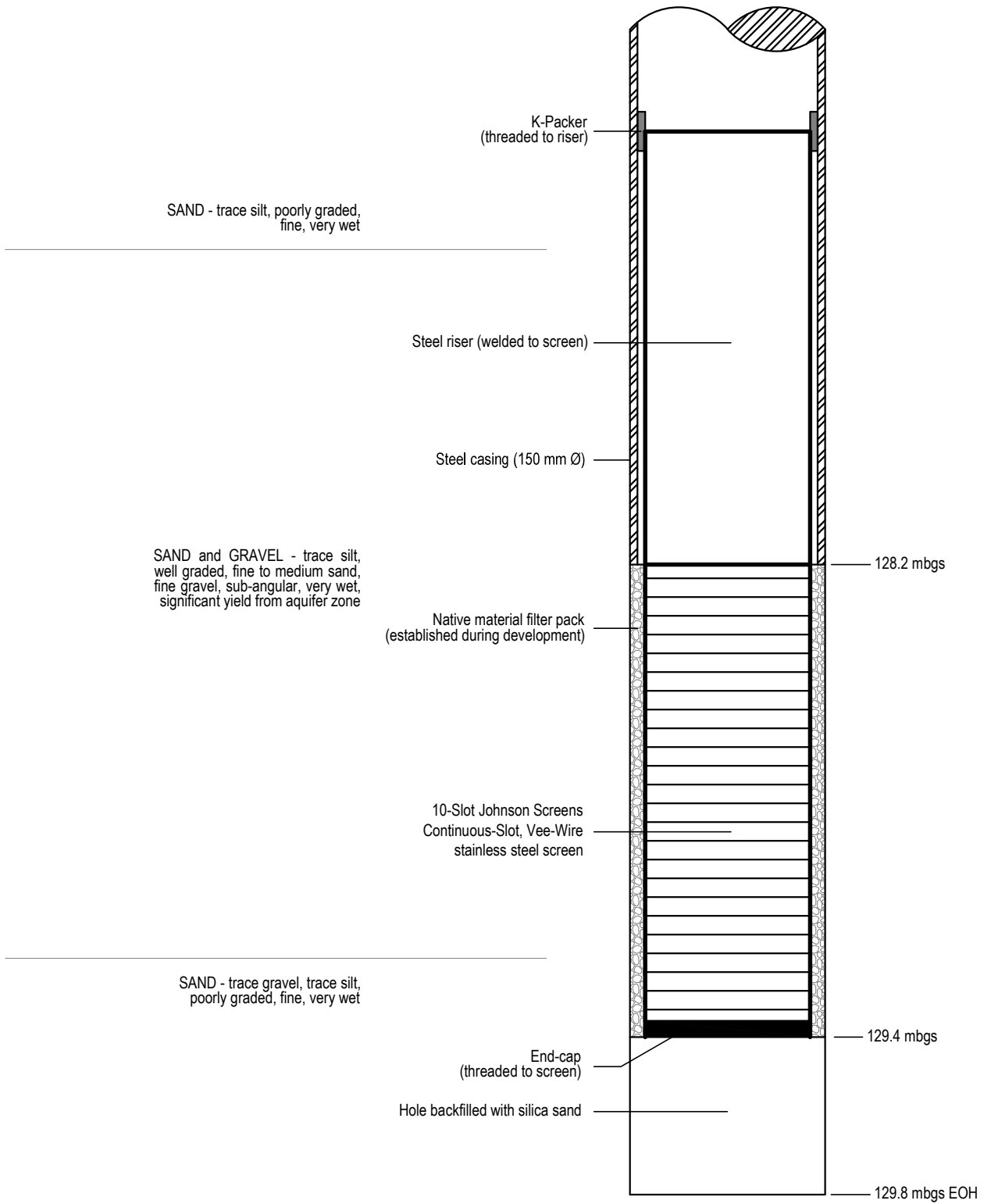
BOREHOLE NO.: TW14-03  
 PROJECT NO.: ENVH2003066-01  
 GROUND ELEV.: 680.0 mamsl (TAKEN WITH HANDHELD GPS)  
 NTS (NAD-83): 6746646 N; 458317 E; Zone 8



Q:\Whitehorse\Data\2014\Drawings\Whitehorse\ENV-H2O\ENVH2003066-01 Takhini River Backup Well Installation\ENVH2003066-01 Fig.1 R0.dwg [FIGURE 2] December 11, 2014 - 1:02:56 pm (BY: [REDACTED])

CLIENT  <b>CHAMPAGNE AND AISHIHIK FIRST NATIONS</b>	<b>TAKHINI RIVER SUBDIVISION WATER SUPPLY</b>												
 <b>TETRA TECH EBA</b>	<b>TW14-03 BOREHOLE LOG</b>												
PROJECT NO. ENVH2003066-01	<table border="1" style="width: 100%; border-collapse: collapse;"> <tr> <td style="width: 25%;">DWN</td> <td style="width: 25%;">CKD</td> <td style="width: 25%;">REV</td> <td style="width: 25%;">0</td> </tr> <tr> <td colspan="2">OFFICE</td> <td colspan="2">DATE</td> </tr> <tr> <td colspan="2">EBA-WHSE</td> <td colspan="2">December 10, 2014</td> </tr> </table>	DWN	CKD	REV	0	OFFICE		DATE		EBA-WHSE		December 10, 2014	
DWN	CKD	REV	0										
OFFICE		DATE											
EBA-WHSE		December 10, 2014											
<b>Figure 2</b>													

Q:\Whitehorse\Data\0201\drawings\Whitehorse\ENV-H2O\ENVH2O03066-01 Takhini River Backup Well Installation\ENVH2O03066-01 Fig.1 R0.dwg [FIGURE 3] December 11, 2014 - 1:46:21 pm (BY:



NOT TO SCALE

CLIENT

**CHAMPAGNE AND AISHIHIK  
FIRST NATIONS**

**TAKHINI RIVER SUBDIVISION WATER SUPPLY**

**SCREEN INSTALLATION DETAILS**



**TETRA TECH EBA**

PROJECT NO.  
ENVH2O03066-01

DWN  
█

CKD  
█

REV  
0

OFFICE  
EBA-WHSE

DATE  
December 10, 2014

**Figure 3**