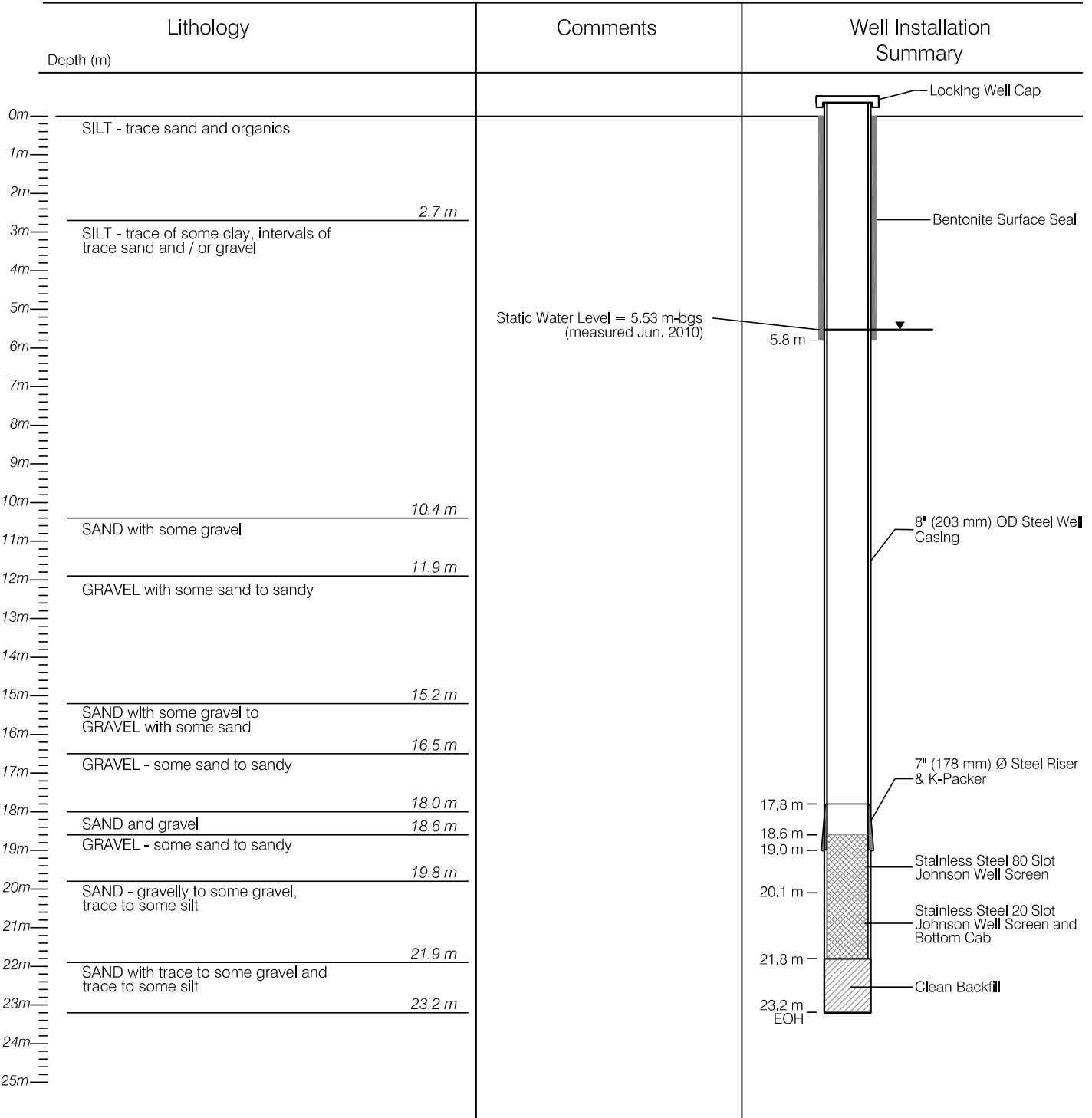


HYDROGEOLOGIC LOG

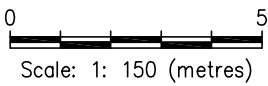
PURPOSE OF HOLE: Community Water Supply Well
 DRILLING METHOD: Dual Air Rotary
 DRILLING DATE: 2010/06/03
 SCREEN INSTALLED: 18.6 - 21.8 m bgs
 CONTRACTOR: Impact Well Drilling

BOREHOLE NO. VOT TW10-2

CASING STICK UP: 0.60 m above grd
 DEPTH TO STATIC: 5.53 m bgs
 DEPTH TO SCREEN (m): 18.6 m bgs



\\Eba\local\corp\Whitehorse\Data\0201\drawings\Teslin\W23101250 Hydrogeology\W23101250_Fig.4_RO.dwg [VOT TW10 - 2] August 12, 2010 - 2:09pm skilump



CLIENT

VILLAGE OF TESLIN

**VOT COMMUNITY WELL COMPLETION
TESLIN, YUKON**

WELL LOG FOR VOT TW10-2

**EBA Engineering
Consultants Ltd.**



PROJECT NO.
W23101250

OFFICE
EBA-WHSE

DWN
[]

DATE
July 2010

CKD
[]

REV
0

Figure 4