



# FIELD BOREHOLE LOG - ENVIRONMENTAL

Borehole No. MW2-19

**Project Name:** CoW - Creechview Sewage Lagoon Monitoring   
**GPS Coordinates:** 673517    N   
**Project No.:** 19130631  
**Location:** -75 m south of MW1-08   
0491722    E   
**Date:** 23 Oct 2019    **Time:** \_\_\_\_\_  
**Field Screening Method:** \_\_\_\_\_   
**Contractor:** Impact Well Drilling  
**Boring Method:** RC   
**Equip. Model:** \_\_\_\_\_   
**Completed by:** D Heffernan  
**Casing/Borehole Diameter:** 6" casing, 4" borehole   
**Weather:** 0 C to -9 C   
**Reviewed by:** \_\_\_\_\_  
**Hammer Drop:** NA   
**Hammer Weight:** NA

DEPTH	SOIL STRATIGRAPHY	WELL SKETCH	DEPTH SCALE	SAMPLES			SAMPLE DESCRIPTION & BORING NOTES
				Cond/Blows	Type	SCN No.	
0'	(SW) SAND, med to fine, trace silt, brown, dry, compact to dense (inferred)		3				
			6				
			9				
6'	(ML) sandy SILT, med to fine sand, grey to brown, w=<PL, very stiff		12				
			15				at 6 ft switched to tri-cone and added water
			18				
53'	Bedrock, grey-green, hard (inferred), dry		21				
			24				water level at 15.05 m on 29 Oct 2019
			27				water possibly at 53.5 ft, current hole depth at 55 ft
			30				switched to hammer bit
			33				at 68 ft colour change to darker green
			36				
			39				clay layer at 87.5 ft, possible fault
			42				becomes moist at 93.5 ft
							transitions to black colour at 101.5 ft, sulfur smell
							water coming out at 112.5 ft
					bottom of hole at 119 ft		

**SAMPLE CONDITION**

DISTURBED   
 GOOD  
 FAIR   
 LOST

**SAMPLE TYPES**

A.S. - Auger sample  
C.S. - Chunk sample (ODEX)  
S.S. - Split spoon

C.C. - Sonic  
D.P. - Direct Push  
H.V. - Hydro Vac

**SPECIAL NOTES**

Est. Volume of drill water used: \_\_\_\_\_ L  
Depth of water: 29.95 m    BGS or TCP    Date: 24 Oct 18    Time: 1400  
Drum No. 0  
Hrs productive: \_\_\_\_\_    Hrs delayed: \_\_\_\_\_

# MONITORING WELL COMPLETION AND BOREHOLE ABANDONMENT DETAILS

1) Well ID: BH19-02

5) Screen Length: 4.57 m

2) Date: 25 Oct 2019

6) Approx. Water Level: 14.21  mbgs  mbtop

3) Borehole Diameter: 4  in  m

7) Approx. Well Depth: 34.63  mbgs  mbtop

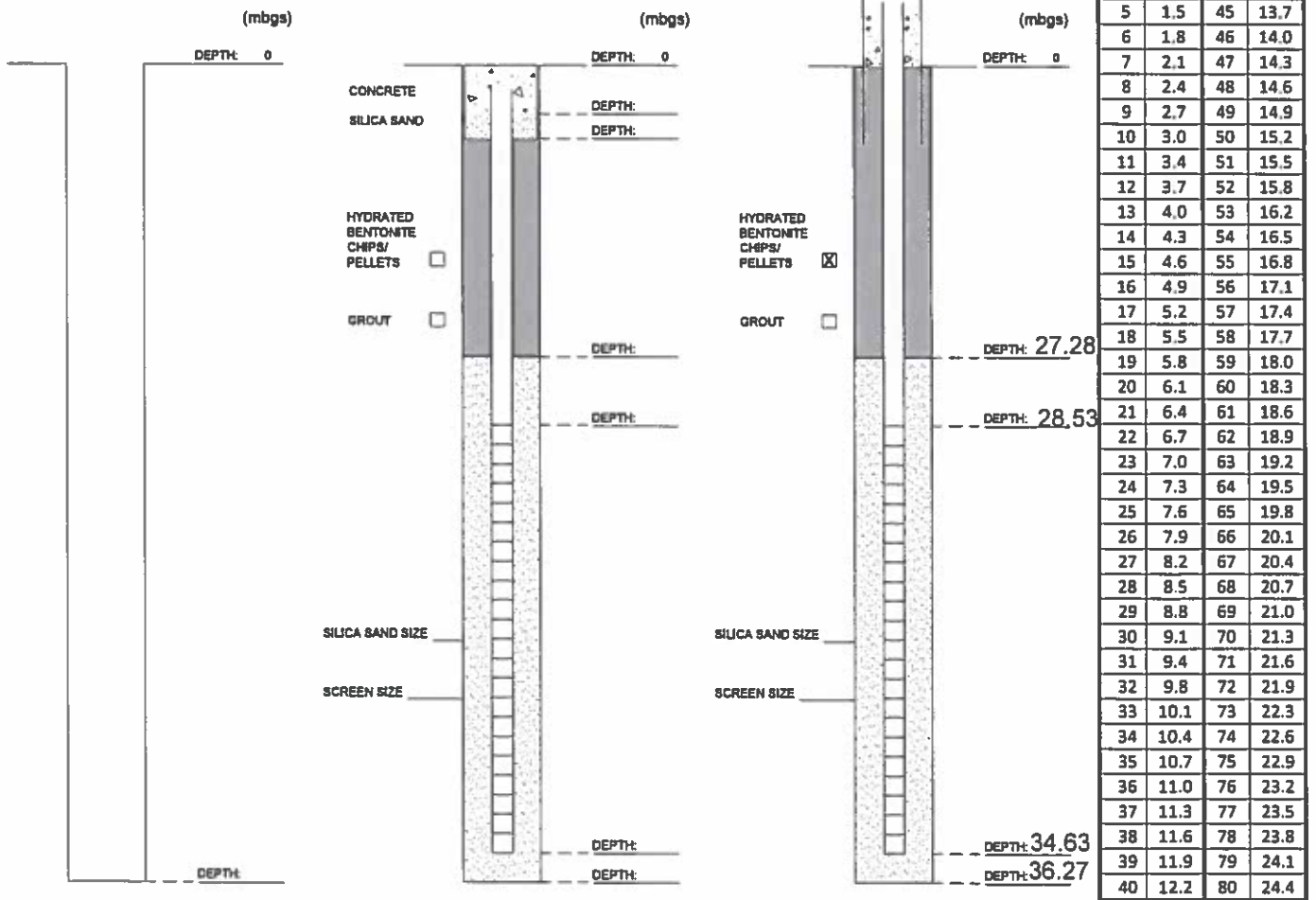
4) Standpipe Diameter: 2  in  m

8) Stick-up Height: 0.42  mags  
(Top of pipe)

## BOREHOLE ABANDONMENT

## FLUSHMOUNT WELL INSTALLATION

## STICK-UP WELL INSTALLATION



Note: 0.15 meters=6 inches

## MONITORING WELL INSTALLATION GUIDELINES

BENTONITE    
  SILICA SAND    
  CONCRETE    
  SLOUGH

mbgs = meters below ground surface;     mags = meters above ground surface;     mbtop = meters below top of pipe