

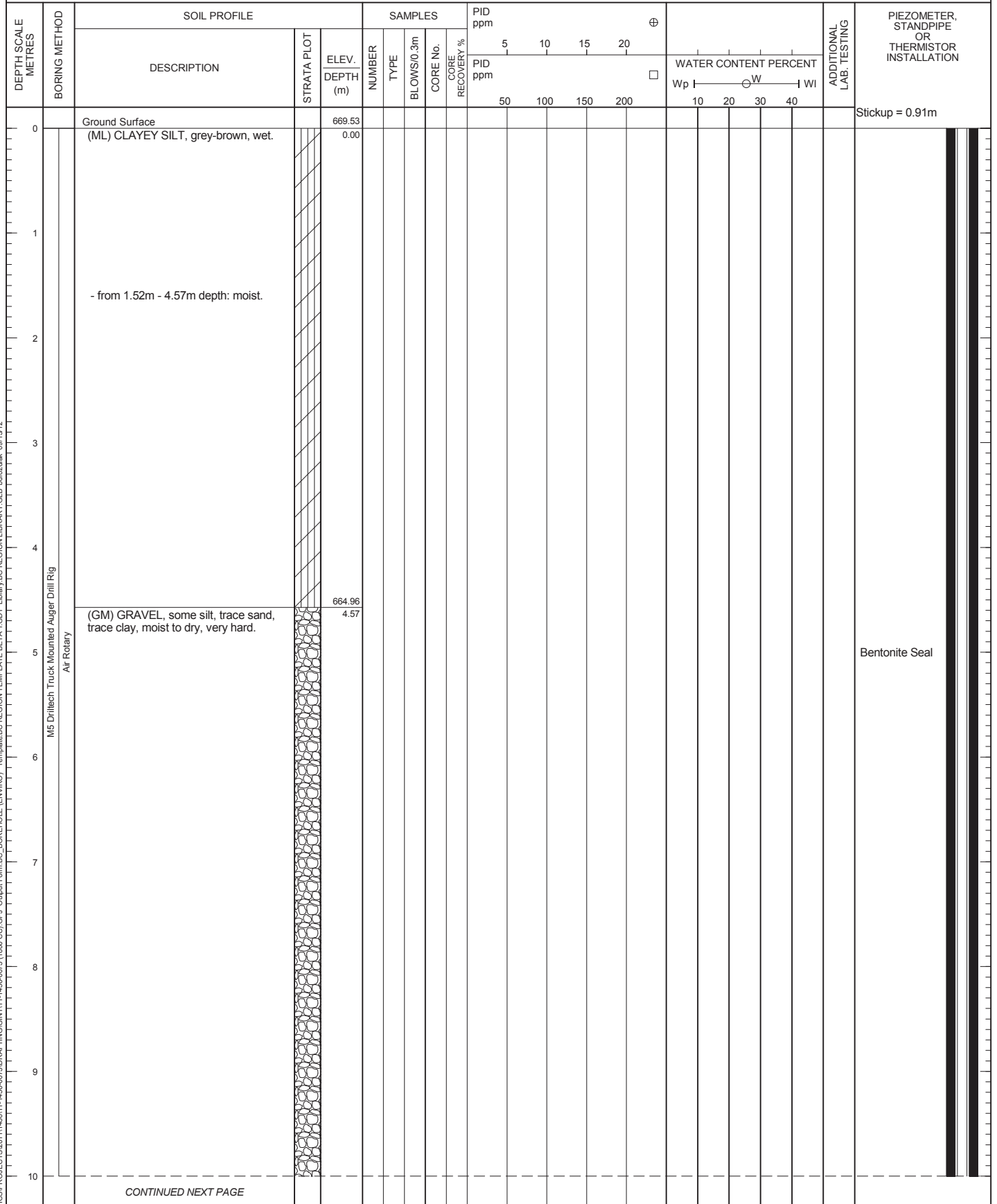
PROJECT No.: 11-1436-0073 (1800)

RECORD OF BOREHOLE: CC-MW12-03

SHEET 1 OF 4
DATUM: Ground Surface

CLIENT: Yukon Government Community Services
PROJECT: Yukon Landfill Assessment
LOCATION: Canyon Creek Solid Waste Disposal Facility
N: 6747903.05 E: 382826.33

DRILLING DATE: June 19, 2012
DRILLING CONTRACTOR: Midnight Sun Drilling



File: N:\BUR-Graphics\PROJECTS\2011\436\11-1436-0073\1800\CC.GPJ_Output_Form\BC_BOREHOLE_TEMPLATE\BC_REGION_TEMPLATE\BETA\TGT_Library\BC_REGION_LIBRARY\GLB_borzdak_09/13/12

DEPTH SCALE
1 : 50



LOGGED: C.B.
CHECKED: **DRAFT**

RECORD OF BOREHOLE: CC-MW12-03

CLIENT: Yukon Government Community Services
PROJECT: Yukon Landfill Assessment
LOCATION: Canyon Creek Solid Waste Disposal Facility
N: 6747903.05 E: 382826.33

DRILLING DATE: June 19, 2012
DRILLING CONTRACTOR: Midnight Sun Drilling

DEPTH SCALE METRES	BORING METHOD	SOIL PROFILE		SAMPLES				PID ppm		WATER CONTENT PERCENT Wp — W — Wi	ADDITIONAL LAB. TESTING	PIEZOMETER, STANDPIPE OR THERMISTOR INSTALLATION											
		DESCRIPTION	STRATA PLOT	ELEV. DEPTH (m)	NUMBER	TYPE	BLOWS/0.3m	CORE No.	CORE RECOVERY %				5	10	15	20							
10	M5 Drilltech Truck Mounted Auger Drill Rig Air Rotary	(GM) GRAVEL, some silt, trace sand, trace clay, moist to dry, very hard. <i>(continued)</i>																					
11																							
12																							
13																							
14																							
15																							
16																							
17																							
18																							
19																							
20																							
		CONTINUED NEXT PAGE																					

File: N:\BUR-Graphics\PROJECTS\2011\436\11-1436-0073\1800-CC-MW12-03\Output Form\BC_BOREHOLE (ENVIRO). Template\BC_REGION TEMPLATE BETA 1.GDT Library\BC_REGION LIBRARY.GLB bdrszdak 09/13/12



DEPTH SCALE METRES	BORING METHOD	SOIL PROFILE		SAMPLES				PID ppm		ADDITIONAL LAB. TESTING	PIEZOMETER, STANDPIPE OR THERMISTOR INSTALLATION											
		DESCRIPTION	STRATA PLOT	NUMBER	TYPE	BLOWS/0.3m	CORE No.	CORE RECOVERY %	5			10	15	20								
20	M5 Drilltech Truck Mounted Auger Drill Rig Air Rotary	(GM) GRAVEL, some silt, trace sand, trace clay, moist to dry, very hard. (continued)																				
21																						
22		(GW) GRAVEL, some sand, trace silt, grey, dry.		647.89 21.64																		
23																						
24																						
25																						
26																						
27		(SP) fine SAND, trace silt, brown, moist.	643.32 26.21																			
28																						
29		- at 28.65m depth: wet.																				
30																						

File: N:\BUR\GRAPHICS\PROJECTS\2011\436\11-1436-0073\1800\CO.GPJ Output Form BC_BOREHOLE (ENVIRO)_Template\BC_REGION\TEMPLATE\BETA LGDT_Library\BC_REGION\LIBRARY\GLB\brsdzdk_09/13/12



Bentonite Seal

10/20 Silica Sand

06/19/2012
CC-BH12-03

51mm Slotted PVC Pipe

CONTINUED NEXT PAGE

PROJECT No.: 11-1436-0073 (1800)

RECORD OF BOREHOLE: CC-MW12-03

SHEET 4 OF 4
 DATUM: Ground Surface

CLIENT: Yukon Government Community Services
 PROJECT: Yukon Landfill Assessment
 LOCATION: Canyon Creek Solid Waste Disposal Facility
 N: 6747903.05 E: 382826.33

DRILLING DATE: June 19, 2012
 DRILLING CONTRACTOR: Midnight Sun Drilling

DEPTH SCALE METRES	BORING METHOD	SOIL PROFILE			SAMPLES				PID ppm		WATER CONTENT PERCENT Wp W Wi	ADDITIONAL LAB. TESTING	PIEZOMETER, STANDPIPE OR THERMISTOR INSTALLATION	
		DESCRIPTION	STRATA PLOT	ELEV. DEPTH (m)	NUMBER	TYPE	BLOWS/0.3m	CORE No.	CORE RECOVERY %	5				10
30	Air Rotary									(SP) fine SAND, trace silt, brown, moist. (continued)		638.14		
31		31.39												
32		End of Borehole.												
33														
34														
35														
36														
37														
38														
39														
40														

File: N:\BUR-Graphics\PROJECTS\2011\436-0073\1800\CO.GPJ_Output_Form\BC_BOREHOLE (ENVIRO). Template\BC_REGION_TEMPLATE BETA (GDT_Library\BC_REGION_LIBRARY.GLB) bdrszdak_09/13/12

DEPTH SCALE
 1 : 50



LOGGED: C.B.
 CHECKED: **DRAFT**