



Morrison Hershfield
2440 Don Reid Drive
Ottawa, ON K1H 1E1

BORING NUMBER MW42

CLIENT Government of Yukon - Site Assessment and Remediation Unit

PROJECT NAME Swift River

PROJECT NUMBER 5130973

PROJECT LOCATION Swift River Highway Maintance Camp, Yukon

DATE STARTED 11/12/13 COMPLETED 11/12/13

GROUND ELEVATION 881.65 mASL HOLE SIZE 152 mm (6 inch)

DRILLING CONTRACTOR Midnight Sun Drilling Inc.

UTM COORDINATES: 377945 mE

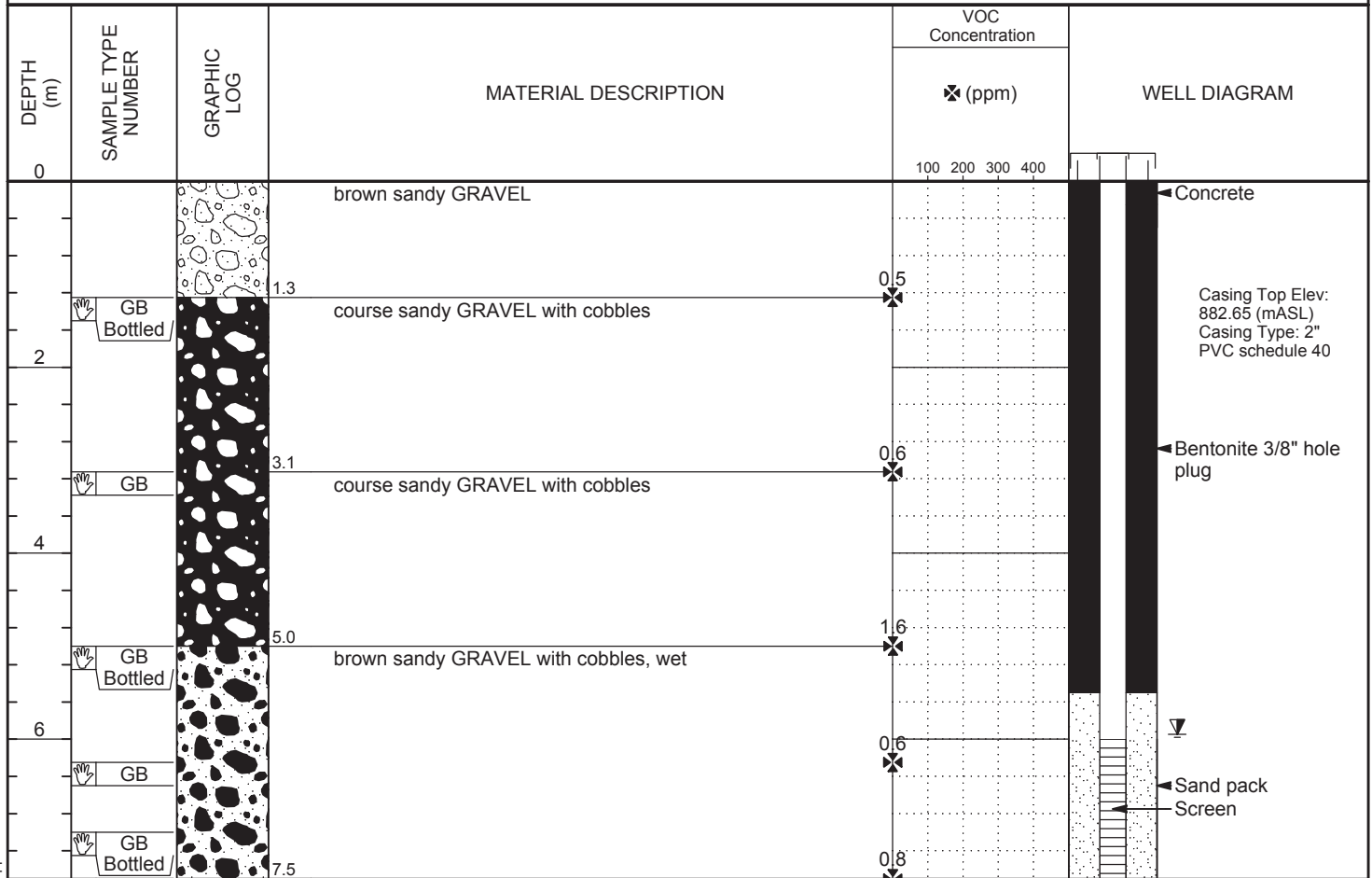
(UTM ZONE 9, NAD83) 6653795 mN

DRILLING METHOD Air Rotary

LOGGED BY J. Kerr CHECKED BY F. Pearson

GROUND WATER LEVEL: 5.95 m / Elev 875.70 mASL

NOTES _____



Bottom of hole at 7.50 m.