

CHILKOOT GEOLOGICAL ENGINEERS LTD.

5B Bennett Road, Whitehorse, Yukon
(867) 335-2085 chilkoot@northwestel.net



BOREHOLE LOG

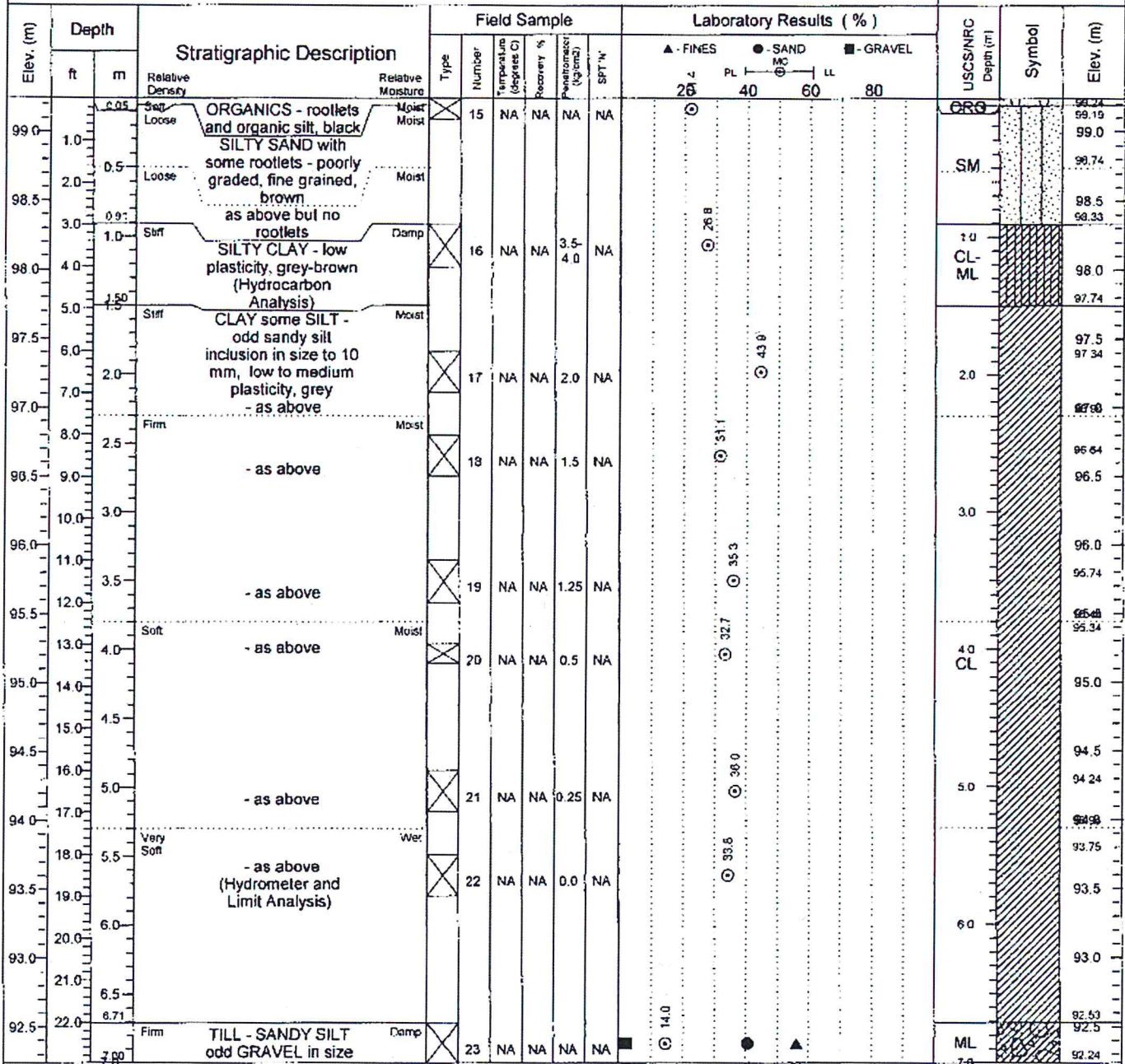
Client : Teslin Tlingit Council
Location : Sawmill Land Treatment Facility
Project : Hydrological Assessment - Well Installations
Chilkoot Project No. : 200-002-14

Date Drilled: May 25-26, 2014
Elevation : 99.24 meters
Depth of BH: 10.97 meters
Instrumentation: Well to 89.36 m

BOREHOLE

2-14

Sheet 1 of 2



Drilled By : Donjek Services

Drill Type : CME 750 (FN60)

Drill Method : 150 mm Solid Stem

Bit Type : Fish Tail

Water Level(s)
 ▽ During Drilling ▽ After Drilling
 ▽ At End of Drilling

Logged By : T.Dhara, P.Eng.
Date : May 25-26, 2014

Data Entry By : T.Dhara, P.Eng.
Date : June 3-6, 2014

Reviewed By:
Date : June 11, 2014

CHILKOOT GEOLOGICAL ENGINEERS LTD.

5B Bennett Road, Whitehorse, Yukon
(867) 335-2085 chilkoot@northwestel.net



BOREHOLE LOG

Client : Teslin Tlingit Council
Location : Sawmill Land Treatment Facility
Project : Hydrological Assessment - Well Installations
Chilkoot Project No. : 200-002-14

Date Drilled: May 25-26, 2014
Elevation : 99.24 meters
Depth of BH: 10.97 meters
Instrumentation: Well to 89.36 m

BOREHOLE

2-14

Sheet 2 of 2

Elev. (m)	Depth		Stratigraphic Description	Relative Density	Relative Moisture	Field Sample					Laboratory Results (%)				USCS/NRC Depth (m)	Symbol	Elev. (m)		
	ft	m				Type	Number	Temperature (degrees C)	Recovery %	Penetration (kg/cm ²)	SPT N	PI	MC	LL				80	
92.0	24.0	7.5	to 20 mm - non-plastic, grey with orange-brown streaks of oxidation TILL - SILTY GRAVELLY SAND - fine to medium grained, poorly graded, grey - as above but with fracture rock in size to 35 mm	Loose	Damp	24	NA	NA	NA	NA	7.9	20	40	60	80	7.10	Covered To	92.0	
91.5	25.0	8.0		25	NA	NA	NA	NA	NA	8.7	15.6	30.9	40.3	44.1	52.2	8.0	SM	91.5	
91.0	27.0	8.5	- as above but grey-brown - hard drilling beyond 9.14 meters	Dense	Damp	26	NA	NA	NA	NA	4.7	7.7	7.7	7.7	7.7	9.0	9.0	SM	90.5
90.5	28.0	8.5				27	NA	NA	NA	NA	NA	7.3	7.3	7.3	7.3	7.3	9.1	SM	90.1
90.0	30.0	9.1				28	NA	NA	NA	NA	NA	7.7	7.7	7.7	7.7	7.7	9.4	SM	89.5
89.5	32.0	10.0	- as above - very hard drilling - Refusal at 10.97 meters End of Borehole No groundwater encountered. Borehole terminated at 10.97 m. below the existing ground surface.			29	NA	NA	NA	NA	8.8	27.0	37.1	37.1	37.1	10.97	SM	88.27	
89.0	34.0	10.5																	
88.5	35.0	10.97																87.5	
88.0																		87.0	
87.5																		86.5	
87.0																		86.0	
86.5																		85.5	

Drilled By : Donjek Services

Drill Type : CME 750 (FN60)

Drill Method : 150 mm Solid Stem

Bit Type : Fish Tail

Water Level(s)

During Drilling After Drilling
 At End of Drilling

Logged By : T.Dhara, P.Eng.
 Date : May 25-26, 2014

Data Entry By : T.Dhara, P.Eng.
 Date : June 3-6, 2014

Reviewed By :
 Date : June 11, 2014