



EDI Environmental Dynamics
 2195 Second Avenue
 Whitehorse, YT
 Telephone: 867 393 4882

WELL NUMBER MW15-01

CLIENT Village of Teslin

PROJECT NAME Solid Waste Disposal Facility

PROJECT NUMBER ██████████

PROJECT LOCATION Teslin, YT

DATE STARTED 04/11/15 COMPLETED 05/11/15

GROUND ELEVATION _____ HOLE SIZE 8" (0.20 m)

DRILLING CONTRACTOR Midnight Sun Drilling

GROUND WATER LEVELS:

DRILLING METHOD Hollow Stem Auger

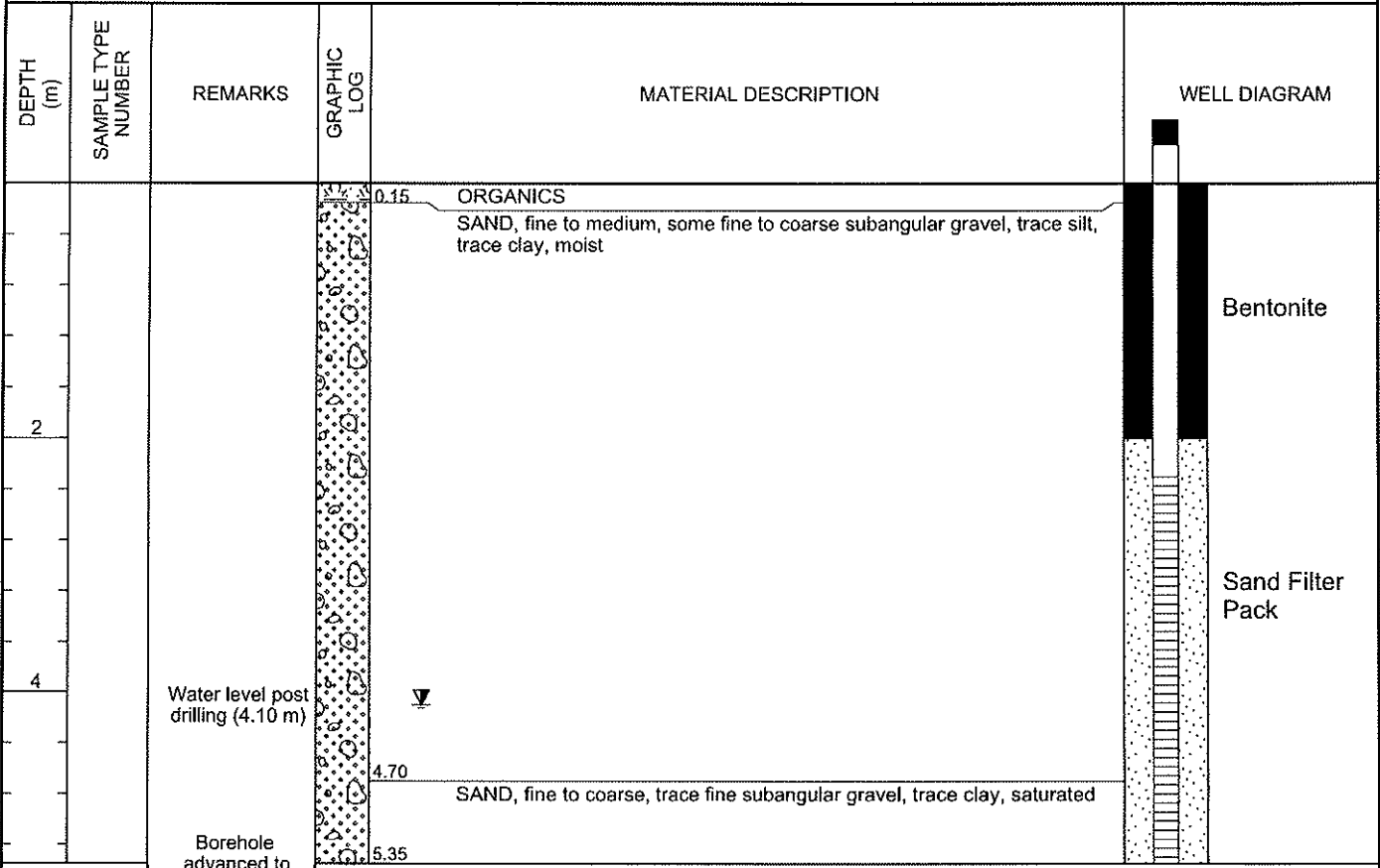
▽ AT TIME OF DRILLING 4.70 m

LOGGED BY ██████ CHECKED BY ██████

▽ AT END OF DRILLING 4.40 m

NOTES Borehole location: 6670582N, 628783E 08V

▽ AFTER DRILLING 4.10 m



GENERAL BH / TP : WELL TESLINMW1501.GPJ GINT STD CANADA LAB.GDT 03/12/15