

PROJECT NO.: [REDACTED]

LOCATION : ANN GULCH

CO-ORDINATES (m): 460,414.7E - 7,102,179.3N

DRILL DESIGNATION : CS-10

START DATE : 29 Jun 11

GROUND ELEVATION (m) : 1,182.8m

DRILLING CONTRACTOR : Lyncorp

FINISH DATE : 30 Jun 11

SURVEY METHOD : DGPS

DRILL METHOD : Rotary Diamond

FINAL DEPTH (m) : 20.4

DATUM : UTM NAD 83

CORE : HQ3

DEPTH TO TOP OF ROCK (m) : 0.9

PLUNGE (°) : -90

FLUID : Water/Polymer

LOGGED BY : [REDACTED]

TREND (°) : N/A

CASED TO (m) : 3.05

REVIEWED BY : [REDACTED]

| DEPTH (m) | SAMPLE TYPE | SAMPLE NO. | SYMBOL | LITHOLOGIC DESCRIPTION | INSTRUMENT DETAILS | SPT BLOWS PER 150mm | Su - kPa | | | | | | |
|-----------|-------------|------------|--------|---|--------------------|---------------------|-----------|----|--------------------------|----|------------------|------------------|------------------|
| | | | | | | | ★ % FINES | | ● SPT (blows/300mm) | | | | |
| | | | | | | | RECOVERY | | MOISTURE CONTENT & SPT N | | | | |
| | | | | | | | 20 | 40 | 60 | 80 | W _p % | W _l % | W _u % |
| 0 | | | | GRAVEL (GM) Silty, some sand, trace cobbles, trace boulders, well graded, loose, maximum particle size = 250 mm, angular, iron staining. Fines: low plastic, firm to stiff, brown, moist, heterogeneous. [COLLUVIUM] | | | | | | | | | |
| 0.9 | | | | Rock encountered at 0.90 m depth. Refer to rock log. | | | | | | | | | |
| 1 | | | | | | | | | | | | | |
| 2 | | | | | | | | | | | | | |
| 3 | | | | | | | | | | | | | |
| 4 | | | | | | | | | | | | | |
| 5 | | | | | | | | | | | | | |
| 6 | | | | | | | | | | | | | |
| 7 | | | | | | | | | | | | | |
| 8 | | | | | | | | | | | | | |
| 9 | | | | | | | | | | | | | |
| 10 | | | | | | | | | | | | | |
| 11 | | | | | | | | | | | | | |
| 12 | | | | | | | | | | | | | |

EGP/SOIL/ EGP_SOIL.GDL BGC.GDT 12/2012

PROJECT: Eagle Gold Project - Infrastructure
 PROJECT NO.: 0792-006

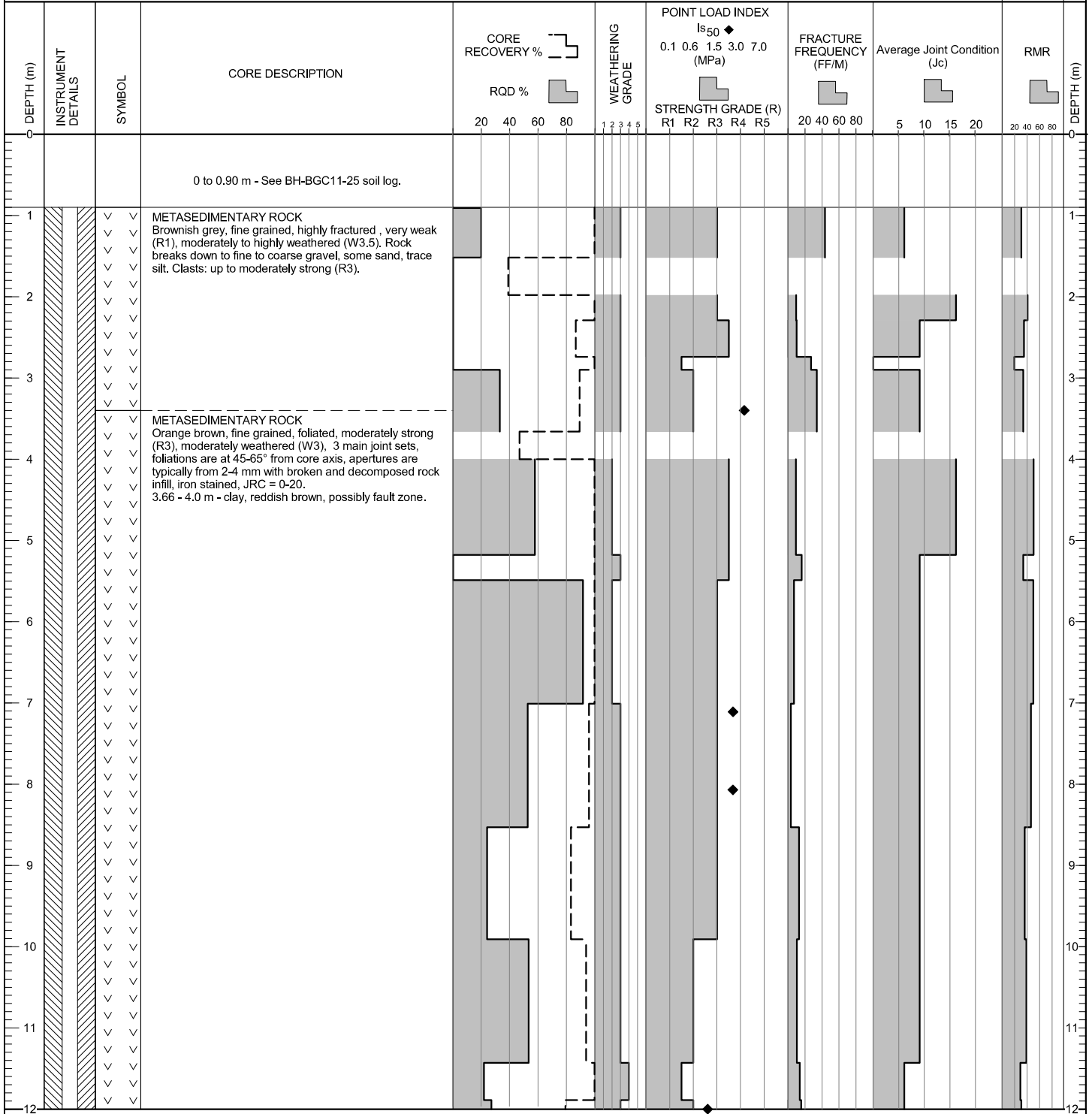
DRILL HOLE # BH-BGC11-25

LOCATION : ANN GULCH

CO-ORDINATES (m) 460,414.7E - 7,102,179.3N
 GROUND ELEVATION (m) : 1,182.8m
 SURVEY METHOD : DGPS
 DATUM : UTM NAD 83
 PLUNGE (°) : -90
 TREND (°) : n/a

DRILL DESIGNATION : CS-10
 DRILLING CONTRACTOR : Lyncorp
 DRILL METHOD : Rotary Diamond
 CORE SIZE : HQ3
 FLUID : Water/Polymer
 CASED TO (m): 3.05

START DATE : 29 Jun 11
 FINISH DATE : 30 Jun 11
 FINAL DEPTH (m) : 20.4
 DEPTH TO TOP OF ROCK (m) : 0.9
 LOGGED BY : SD/SP/EB
 REVIEWED BY : PQ/DW



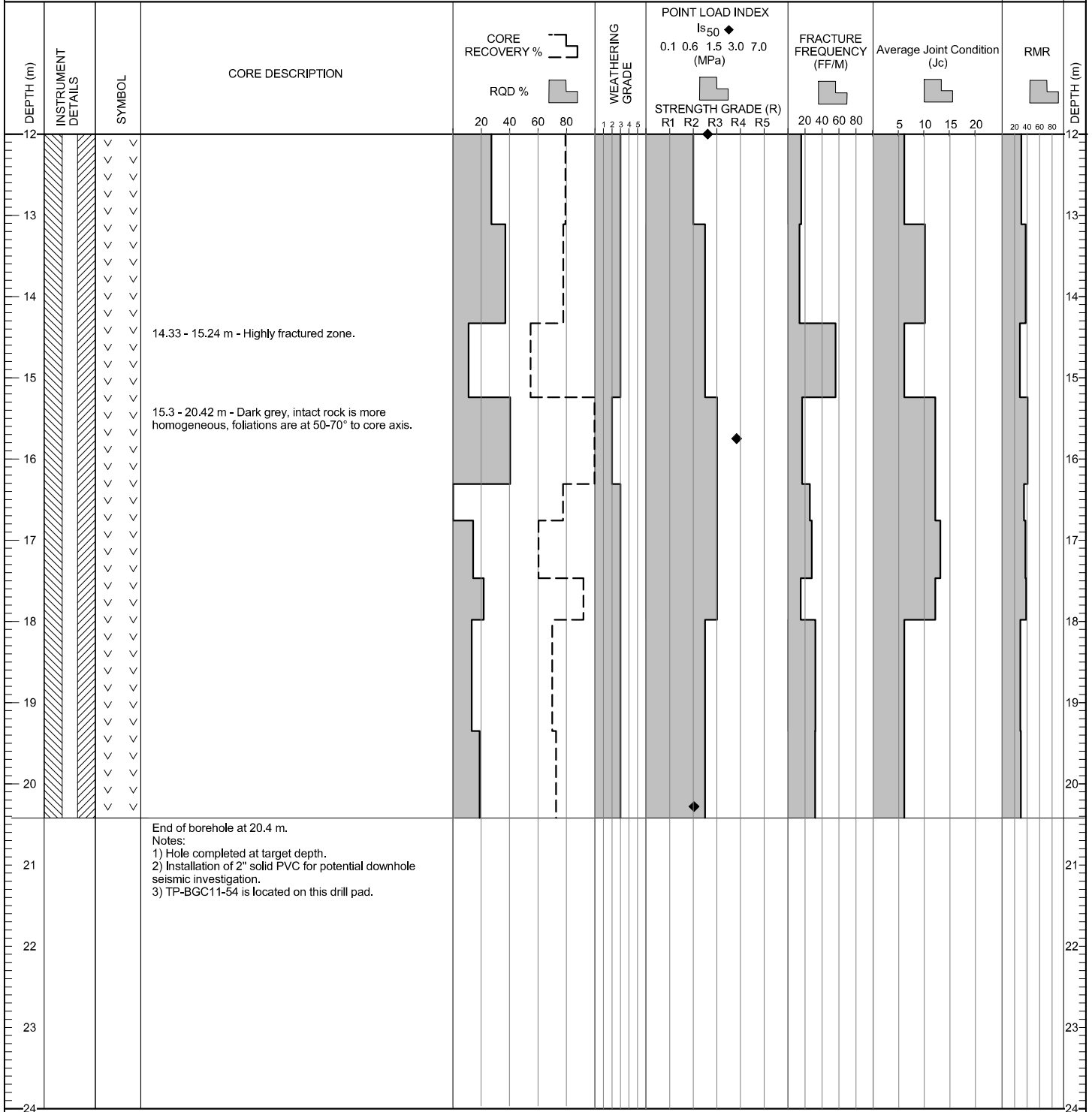
(CONTINUED ON NEXT PAGE)

ESP (ROCK) ESP_ROCK.GDL BGC.GDT 1/20/12

CO-ORDINATES (m) 460,414.7E - 7,102,179.3N
 GROUND ELEVATION (m) : 1,182.8m
 SURVEY METHOD : DGPS
 DATUM : UTM NAD 83
 PLUNGE (°) : -90
 TREND (°) : n/a

DRILL DESIGNATION : CS-10
 DRILLING CONTRACTOR : Lyncorp
 DRILL METHOD : Rotary Diamond
 CORE SIZE : HQ3
 FLUID : Water/Polymer
 CASSED TO (m): 3.05

START DATE : 29 Jun 11
 FINISH DATE : 30 Jun 11
 FINAL DEPTH (m) : 20.4
 DEPTH TO TOP OF ROCK (m) : 0.9
 LOGGED BY : SD/SP/EB
 REVIEWED BY : PQ/DW



ESP (ROCK) ESP_ROCK.GDL BGC.GDT 1/20/12