

PROJECT NO.: [REDACTED]

LOCATION : STUTTLE GULCH

CO-ORDINATES (m): 459,820.0E - 7,100,416.0N

DRILL DESIGNATION : CS-10

START DATE : 26 Jul 11

GROUND ELEVATION (m) : 1,013.0m

DRILLING CONTRACTOR : Lyncorp

FINISH DATE : 27 Jul 11

SURVEY METHOD : DGPS

DRILL METHOD : Rotary Diamond

FINAL DEPTH (m) : 50.5

DATUM : UTM NAD 83

CORE : HQ3

DEPTH TO TOP OF ROCK (m) : 5.4

PLUNGE (°) : -90

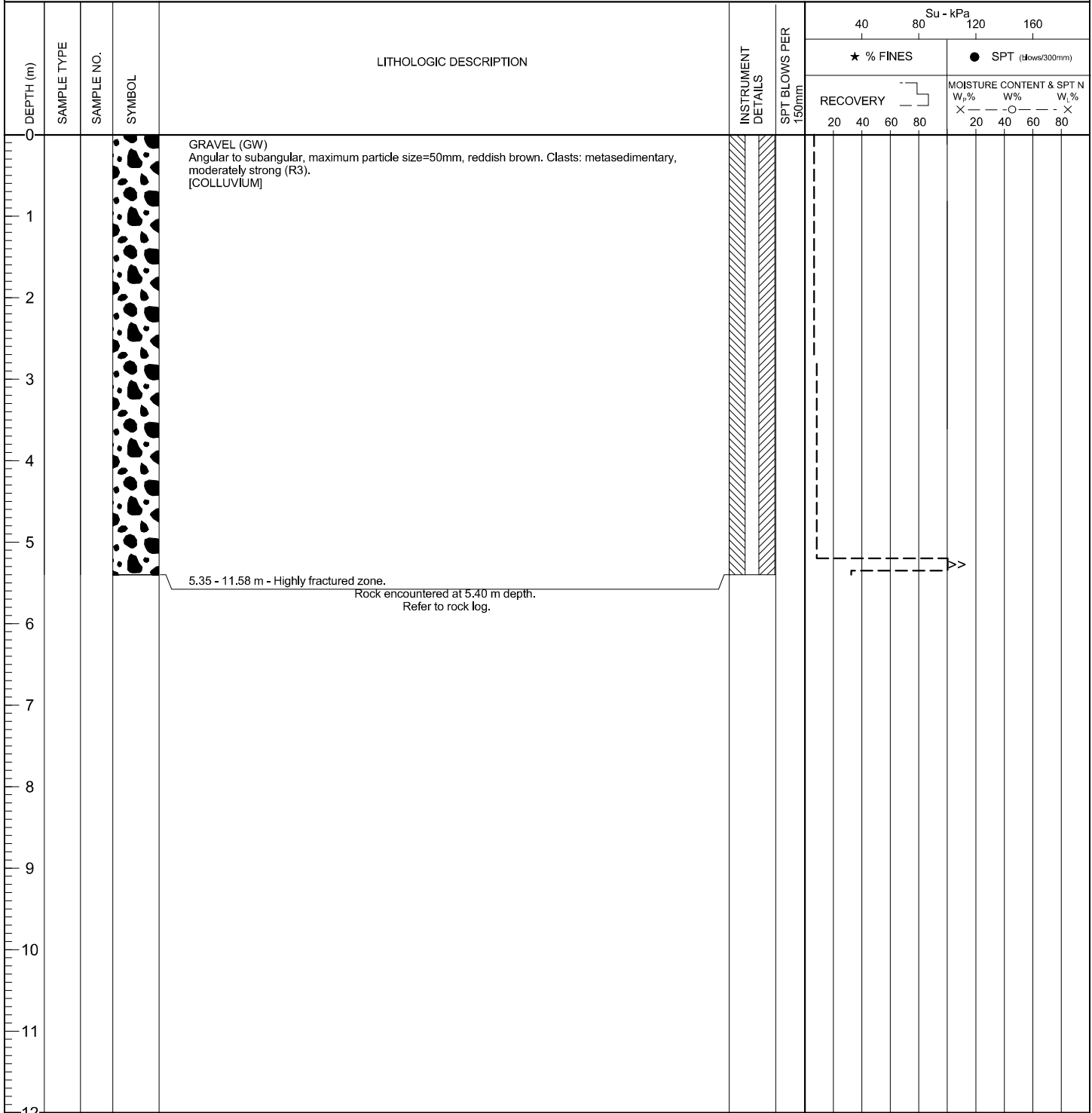
FLUID : Water/Polymer

LOGGED BY : [REDACTED]

TREND (°) : N/A

CASED TO (m) : 8.53

REVIEWED BY : [REDACTED]



EGR (SOL), EGR_SOLLGDL BGC.GDT 12/01/12

PROJECT NO. [REDACTED]

LOCATION : STUTTLE GULCH

CO-ORDINATES (m) 459,820.0E - 7,100,416.0N

DRILL DESIGNATION : CS-10

START DATE : 26 Jul 11

GROUND ELEVATION (m) : 1,013.0m

DRILLING CONTRACTOR : Lyncorp

FINISH DATE : 27 Jul 11

SURVEY METHOD : DGPS

DRILL METHOD : Rotary Diamond

FINAL DEPTH (m) : 50.5

DATUM : UTM NAD 83

CORE SIZE : HQ3

DEPTH TO TOP OF ROCK (m) : 5.4

PLUNGE (°) : -90

FLUID : Water/Polymer

LOGGED BY : [REDACTED]

TREND (°) : n/a

CASED TO (m): 8.53

REVIEWED BY : [REDACTED]

DEPTH (m)	INSTRUMENT DETAILS	SYMBOL	CORE DESCRIPTION	CORE RECOVERY %		WEATHERING GRADE	POINT LOAD INDEX					FRACTURE FREQUENCY (FF/M)	Average Joint Condition (Jc)				RMR	DEPTH (m)									
				CORE RECOVERY %	RQD %		MPa						Jc														
				20	40	60	80	1	2	3	4	5	20	40	60	80	5	10	15	20	20	40	60	80			
0																										0	
1																										1	
2																										2	
3			0 to 5.40 m - See BH-BGC11-38 soil log.																							3	
4																										4	
5																										5	
6		✓	METASEDIMENTARY ROCK Reddish brown-grey, fine grained, highly fractured, foliated, weak to medium strong (R2 to R3), slightly to moderately weathered (W2 to W3), iron stained, siliceous, typically 2 joints sets: foliation at 40-65° from core axis, subhorizontal joint and sets diagonal to foliation at 25-65° from core axis, JRC = 2-20, averaging 12.																								6
7		✓																									7
8		✓																									8
9		✓																									9
10		✓																									10
11		✓																									11
12		✓																									12

(CONTINUED ON NEXT PAGE)

ESP (ROCK) ESP_ROCK.GDL BGC.GDT 1/20/12

PROJECT: Eagle Gold Project - Infrastructure
 PROJECT NO. ██████████

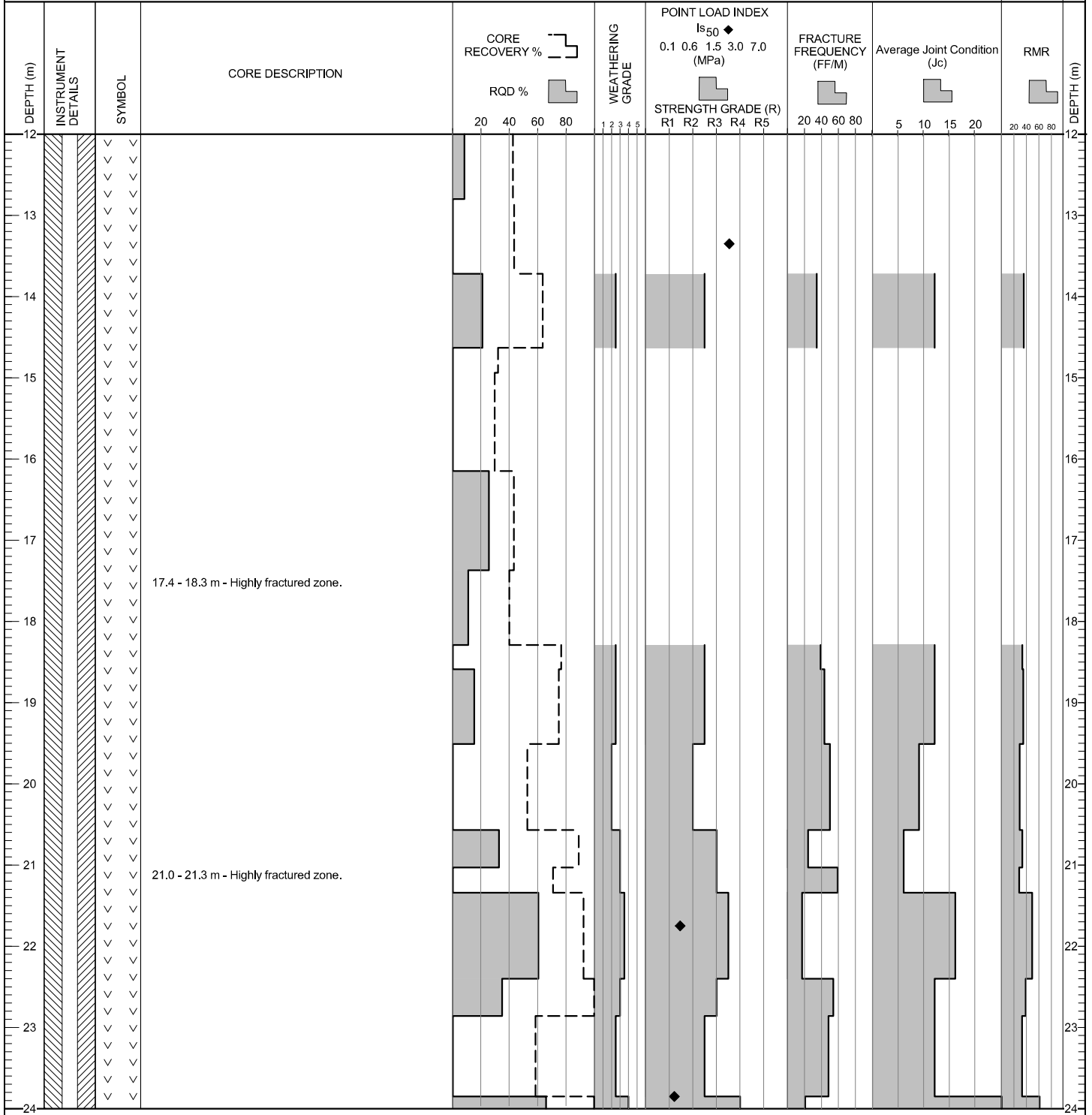
DRILL HOLE # BH-BGC11-38

LOCATION : STUTTLE GULCH

CO-ORDINATES (m) 459,820.0E - 7,100,416.0N
 GROUND ELEVATION (m) : 1,013.0m
 SURVEY METHOD : DGPS
 DATUM : UTM NAD 83
 PLUNGE (°) : -90
 TREND (°) : n/a

DRILL DESIGNATION : CS-10
 DRILLING CONTRACTOR : Lyncorp
 DRILL METHOD : Rotary Diamond
 CORE SIZE : HQ3
 FLUID : Water/Polymer
 CASSED TO (m): 8.53

START DATE : 26 Jul 11
 FINISH DATE : 27 Jul 11
 FINAL DEPTH (m) : 50.5
 DEPTH TO TOP OF ROCK (m) : 5.4
 LOGGED BY : ██████████
 REVIEWED BY : ██████████



(CONTINUED ON NEXT PAGE)

ESP (ROCK) ESP_ROCK.GDL BGC.GDT 1/20/12

PROJECT NO.: [REDACTED]

LOCATION : STUTTLE GULCH

CO-ORDINATES (m) 459,820.0E - 7,100,416.0N

DRILL DESIGNATION : CS-10

START DATE : 26 Jul 11

GROUND ELEVATION (m) : 1,013.0m

DRILLING CONTRACTOR : Lyncorp

FINISH DATE : 27 Jul 11

SURVEY METHOD : DGPS

DRILL METHOD : Rotary Diamond

FINAL DEPTH (m) : 50.5

DATUM : UTM NAD 83

CORE SIZE : HQ3

DEPTH TO TOP OF ROCK (m) : 5.4

PLUNGE (°) : -90

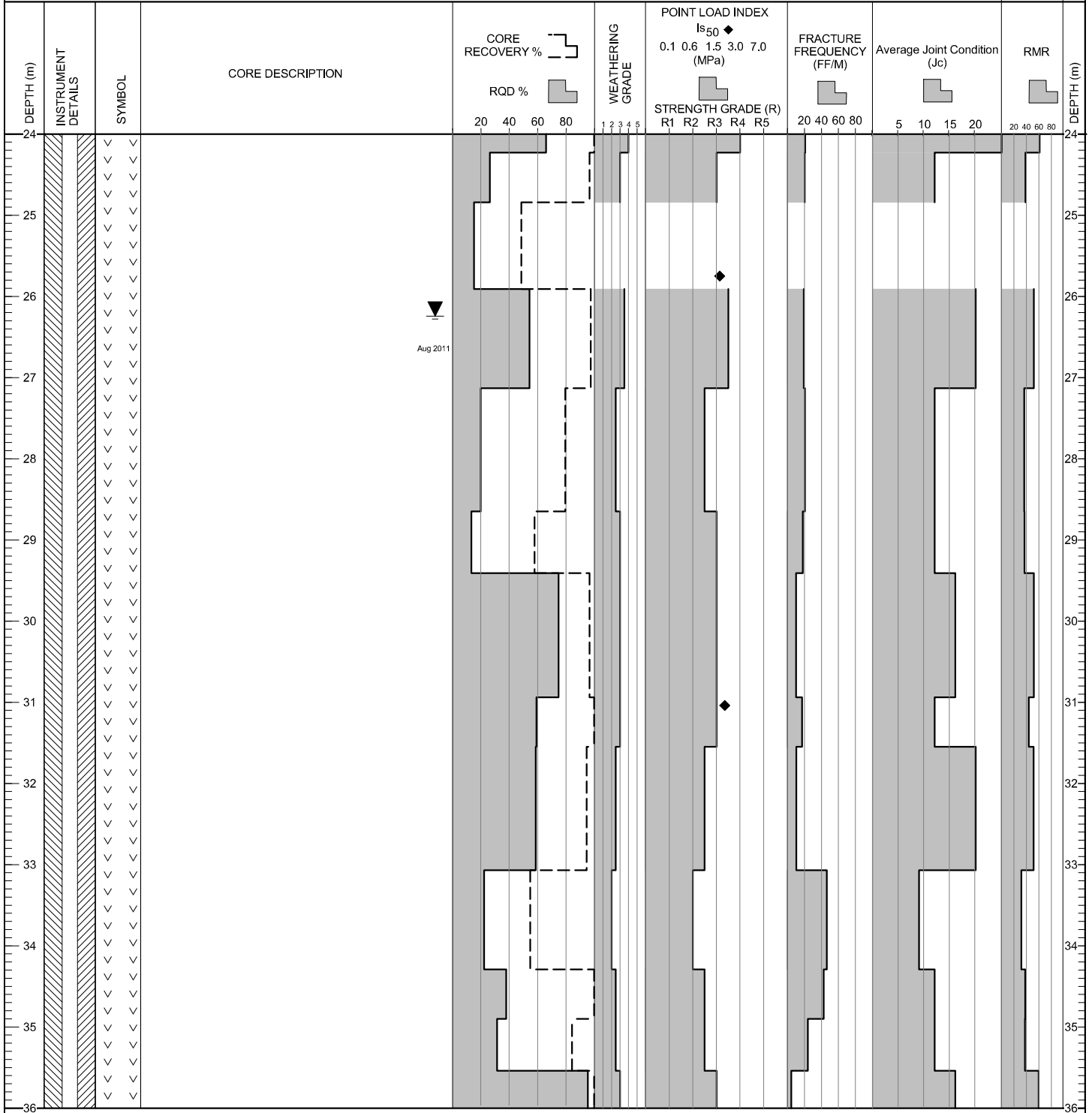
FLUID : Water/Polymer

LOGGED BY : [REDACTED]

TREND (°) : n/a

CASED TO (m): 8.53

REVIEWED BY : [REDACTED]



(CONTINUED ON NEXT PAGE)

ESP (ROCK) ESP_ROCK.GDL BGC.GDT 1/20/12

PROJECT NO.: [REDACTED]

LOCATION : STUTTLE GULCH

CO-ORDINATES (m) 459,820.0E - 7,100,416.0N

DRILL DESIGNATION : CS-10

START DATE : 26 Jul 11

GROUND ELEVATION (m) : 1,013.0m

DRILLING CONTRACTOR : Lyncorp

FINISH DATE : 27 Jul 11

SURVEY METHOD : DGPS

DRILL METHOD : Rotary Diamond

FINAL DEPTH (m) : 50.5

DATUM : UTM NAD 83

CORE SIZE : HQ3

DEPTH TO TOP OF ROCK (m) : 5.4

PLUNGE (°) : -90

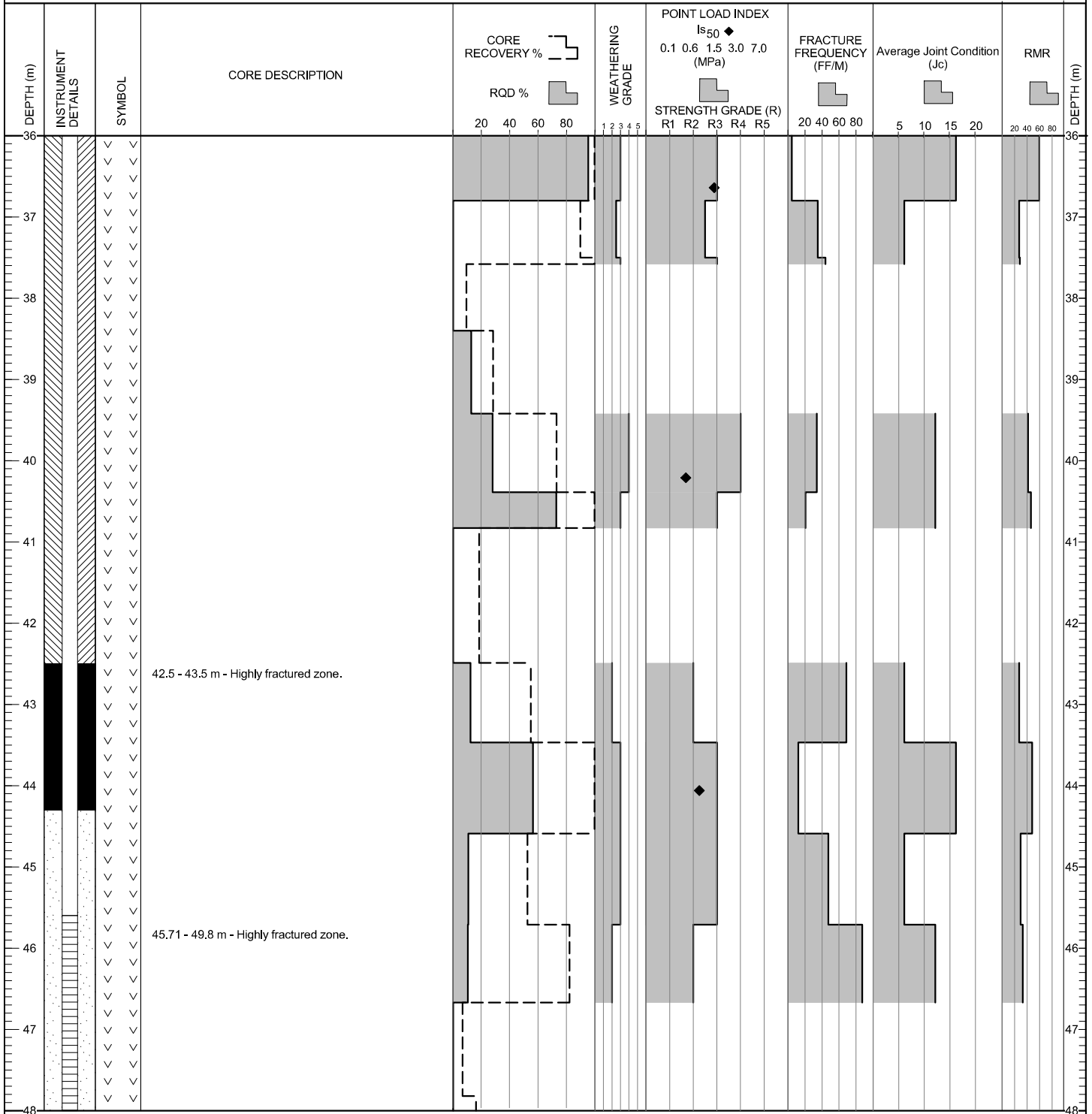
FLUID : Water/Polymer

LOGGED BY : [REDACTED]

TREND (°) : n/a

CASED TO (m): 8.53

REVIEWED BY : [REDACTED]



(CONTINUED ON NEXT PAGE)

ESP (ROCK) ESP_ROCK.GDL BGC.GDT 1/20/12

CO-ORDINATES (m) 459,820.0E - 7,100,416.0N
 GROUND ELEVATION (m) : 1,013.0m
 SURVEY METHOD : DGPS
 DATUM : UTM NAD 83
 PLUNGE (°) : -90
 TREND (°) : n/a

DRILL DESIGNATION : CS-10
 DRILLING CONTRACTOR : Lyncorp
 DRILL METHOD : Rotary Diamond
 CORE SIZE : HQ3
 FLUID : Water/Polymer
 CASSED TO (m): 8.53

START DATE : 26 Jul 11
 FINISH DATE : 27 Jul 11
 FINAL DEPTH (m) : 50.5
 DEPTH TO TOP OF ROCK (m) : 5.4
 LOGGED BY : ██████████
 REVIEWED BY : ██████████

DEPTH (m)	INSTRUMENT DETAILS	SYMBOL	CORE DESCRIPTION	CORE RECOVERY %		WEATHERING GRADE	POINT LOAD INDEX I_{50} (MPa)					FRACTURE FREQUENCY (FF/M)	Average Joint Condition (Jc)	RMR	DEPTH (m)
				CORE RECOVERY %	RQD %		0.1	0.6	1.5	3.0	7.0				
48															48
49															49
50															50
51			End of borehole at 50.5 m. Notes: 1) Hole completed at target depth. 2) Installation of 2" PVC for standpipe piezometer.												51
52															52
53															53
54															54
55															55
56															56
57															57
58															58
59															59
60															60

ESP (ROCK) ESP_ROCK.GDL BGC.GDT 1/20/12