

PROJECT: Eagle Gold Project - Infrastructure  
 PROJECT NO.: 0792-006


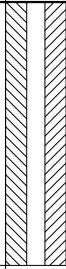
# DRILL HOLE # BH-BGC11-46

LOCATION : PLATINUM GULCH

CO-ORDINATES (m): 460,262.7E - 7,099,004.0N  
 GROUND ELEVATION (m) : 1,246.1m  
 SURVEY METHOD : DGPS  
 DATUM : UTM NAD 83  
 PLUNGE (°) : -90  
 TREND (°) : N/A

DRILL DESIGNATION : CS-1000  
 DRILLING CONTRACTOR : Lyncorp  
 DRILL METHOD : Rotary Diamond  
 CORE : HQ3  
 FLUID : Water/Polymer  
 CASED TO (m) : 10.91

START DATE : 04 Aug 11  
 FINISH DATE : 04 Aug 11  
 FINAL DEPTH (m) : 20.1  
 DEPTH TO TOP OF ROCK (m) : 2.4  
 LOGGED BY : SP/JD  
 REVIEWED BY : PQ/DW

DEPTH (m)	SAMPLE TYPE	SAMPLE NO.	SYMBOL	LITHOLOGIC DESCRIPTION	INSTRUMENT DETAILS	SPT BLOWS PER 150mm	Su - kPa						
							★ % FINES		● SPT (blows/300mm)				
							RECOVERY		MOISTURE CONTENT & SPT N				
							20	40	60	80	W <sub>p</sub> %	W <sub>l</sub> %	W <sub>u</sub> %
0				COBBLES Granodiorite and quartzite cobbles. [FILL/COLLUVIUM?]									
2.4				Rock encountered at 2.44 m depth. Refer to rock log.									
1													
2													
3													
4													
5													
6													
7													
8													
9													
10													
11													
12													

EGP/SOL/ EGP\_SOIL.GDL BGC.GDT 12/01/12



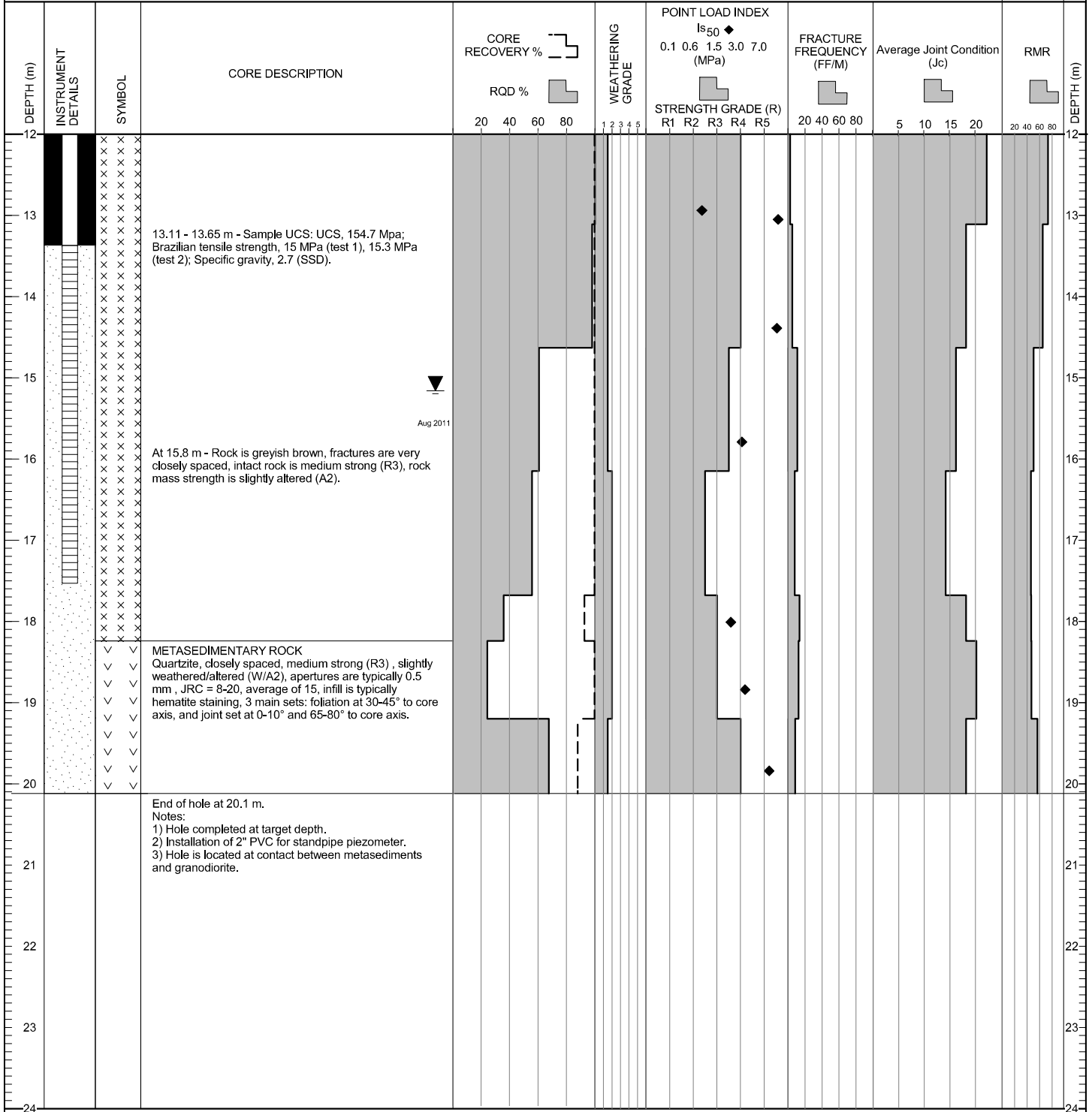
CLIENT: Victoria Gold Corporation  
 PRINT DATE: 1/20/2012



CO-ORDINATES (m) 460,262.7E - 7,099,004.0N  
 GROUND ELEVATION (m) : 1,246.1m  
 SURVEY METHOD : DGPS  
 DATUM : UTM NAD 83  
 PLUNGE (°) : -90  
 TREND (°) : n/a

DRILL DESIGNATION : CS-1000  
 DRILLING CONTRACTOR : Lyncorp  
 DRILL METHOD : Rotary Diamond  
 CORE SIZE : HQ3  
 FLUID : Water/Polymer  
 CASSED TO (m): 10.91

START DATE : 04 Aug 11  
 FINISH DATE : 04 Aug 11  
 FINAL DEPTH (m) : 20.1  
 DEPTH TO TOP OF ROCK (m) : 2.4  
 LOGGED BY : SP/JD  
 REVIEWED BY : PQ/DW



ESP (ROCK) ESP\_ROCK.GDL BGC.GDT 1/20/12