

PROJECT: Eagle Gold Project - Infrastructure
 PROJECT NO. [REDACTED]

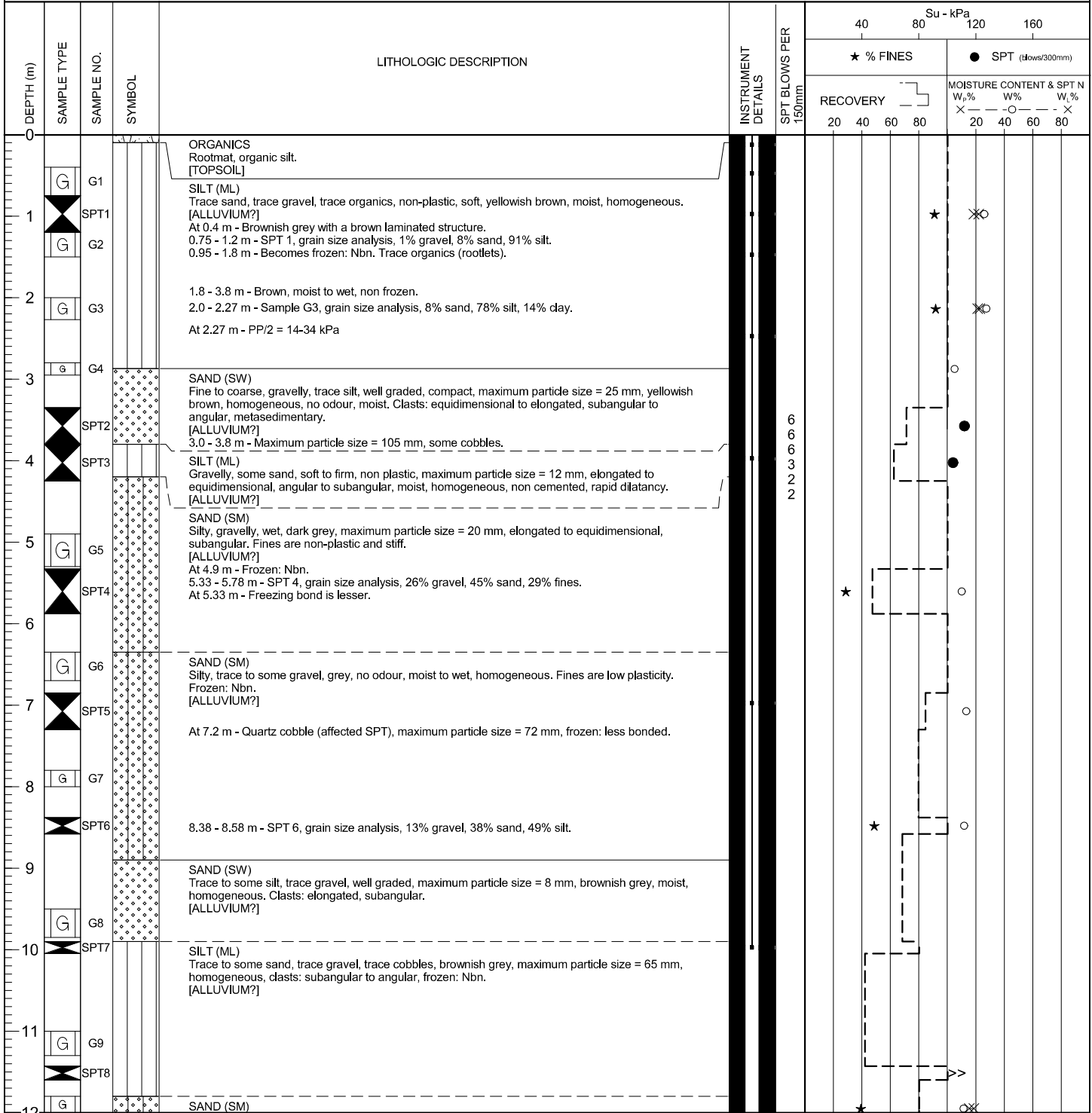
DRILL HOLE # BH-BGC11-47

LOCATION : STEINER AREA

CO-ORDINATES (m): 458,811.9E - 7,100,698.9N
 GROUND ELEVATION (m) : 841.8m
 SURVEY METHOD : DGPS
 DATUM : UTM NAD 83
 PLUNGE (°) : -90
 TREND (°) : N/A

DRILL DESIGNATION : MARL 4CT
 DRILLING CONTRACTOR : Midnight Sun Drilling
 DRILL METHOD : Auger SSA/HSA/CRREL
 CORE : N/A
 FLUID : N/A
 CASED TO (m) :

START DATE : 04 Aug 11
 FINISH DATE : 04 Aug 11
 FINAL DEPTH (m) : 16.0
 DEPTH TO TOP OF ROCK (m) :
 LOGGED BY : [REDACTED]
 REVIEWED BY : [REDACTED]



(Continued on next page)

EGP (SOL), EGP_S01L.GDL BGC.GDT 1/20/12

CO-ORDINATES (m): 458,811.9E - 7,100,698.9N
 GROUND ELEVATION (m) : 841.8m
 SURVEY METHOD : DGPS
 DATUM : UTM NAD 83
 PLUNGE (°) : -90
 TREND (°) : N/A

DRILL DESIGNATION : MARL 4CT
 DRILLING CONTRACTOR : Midnight Sun Drilling
 DRILL METHOD : Auger SSA/HSA/CRREL
 CORE : N/A
 FLUID : N/A
 CASSED TO (m) :

START DATE : 04 Aug 11
 FINISH DATE : 04 Aug 11
 FINAL DEPTH (m) : 16.0
 DEPTH TO TOP OF ROCK (m) :
 LOGGED BY : [REDACTED]
 REVIEWED BY : [REDACTED]

DEPTH (m)	SAMPLE TYPE	SAMPLE NO.	SYMBOL	LITHOLOGIC DESCRIPTION	INSTRUMENT DETAILS	SPT BLOWS PER 150mm	Su - kPa						
							★ % FINES		● SPT (blows/300mm)				
						RECOVERY		MOISTURE CONTENT & SPT N					
						20	40	60	80	W _p %	W _l %	W _u %	SPT N
12	G	G10	[Symbol]	Silty, some fine gravel, trace cobbles, brownish grey, maximum particle size = 75 mm, low plasticity. Clasts: subangular to angular. [ALLUVIUM?] 11.8 - 12.1 m - Sample G10, grain size analysis, 15% gravel, 46% sand, 39% silt. Below 12.3 m - Sand content increases.	[Symbol]								
13	G	G12	[Symbol]	SILT (ML) Sandy, some fine gravel, trace cobbles, brownish grey, maximum particle size = 75 mm, low plasticity, clasts: subangular to angular. [ALLUVIUM?] At 13.0 m - Difficult to auger, machine stalls out.	[Symbol]								
14	G	G13	[Symbol]	SILT (ML) Sandy, gravelly, trace to some cobbles, grey, moist, frozen Nbn, clasts: gravel is subangular, cobbles are subrounded. [ALLUVIUM?] Below 13.5 m - Fine gravel and cobble content increases with depth.	[Symbol]								
15	G	G14	[Symbol]	SILT (ML) Sandy, subangular to angular, gravelly, trace to some cobbles, subrounded. Frozen: Nbn. [ALLUVIUM?]	[Symbol]								
16	G	G15	[Symbol]	End of borehole at 16.0 m. Notes: 1) Hole completed at target depth. 2) Installation of 2" solid PVC for thermistor, serial #11.5-1, annulus not backfilled. 3) 10 m thermistor, serial #11.5-1, installed on Aug. 10, 2011. Thermistor removed from this hole on Aug. 28 for relocation to BH-BGC11-58.	[Symbol]								

EGR (SOL), EGP, SOL, GDL BGC, GDT 12/2012