

PROJECT NO.: [REDACTED]

LOCATION : ANN GULCH

CO-ORDINATES (m): 459,113.1E - 7,101,239.4N

DRILL DESIGNATION : CS-1000

START DATE : 10 Aug 11

GROUND ELEVATION (m) : 883.7m

DRILLING CONTRACTOR : Lyncorp

FINISH DATE : 11 Aug 11

SURVEY METHOD : DGPS

DRILL METHOD : Rotary Diamond

FINAL DEPTH (m) : 30.2

DATUM : UTM NAD 83

CORE : HQ3

DEPTH TO TOP OF ROCK (m) : 5.8

PLUNGE (°) : -90

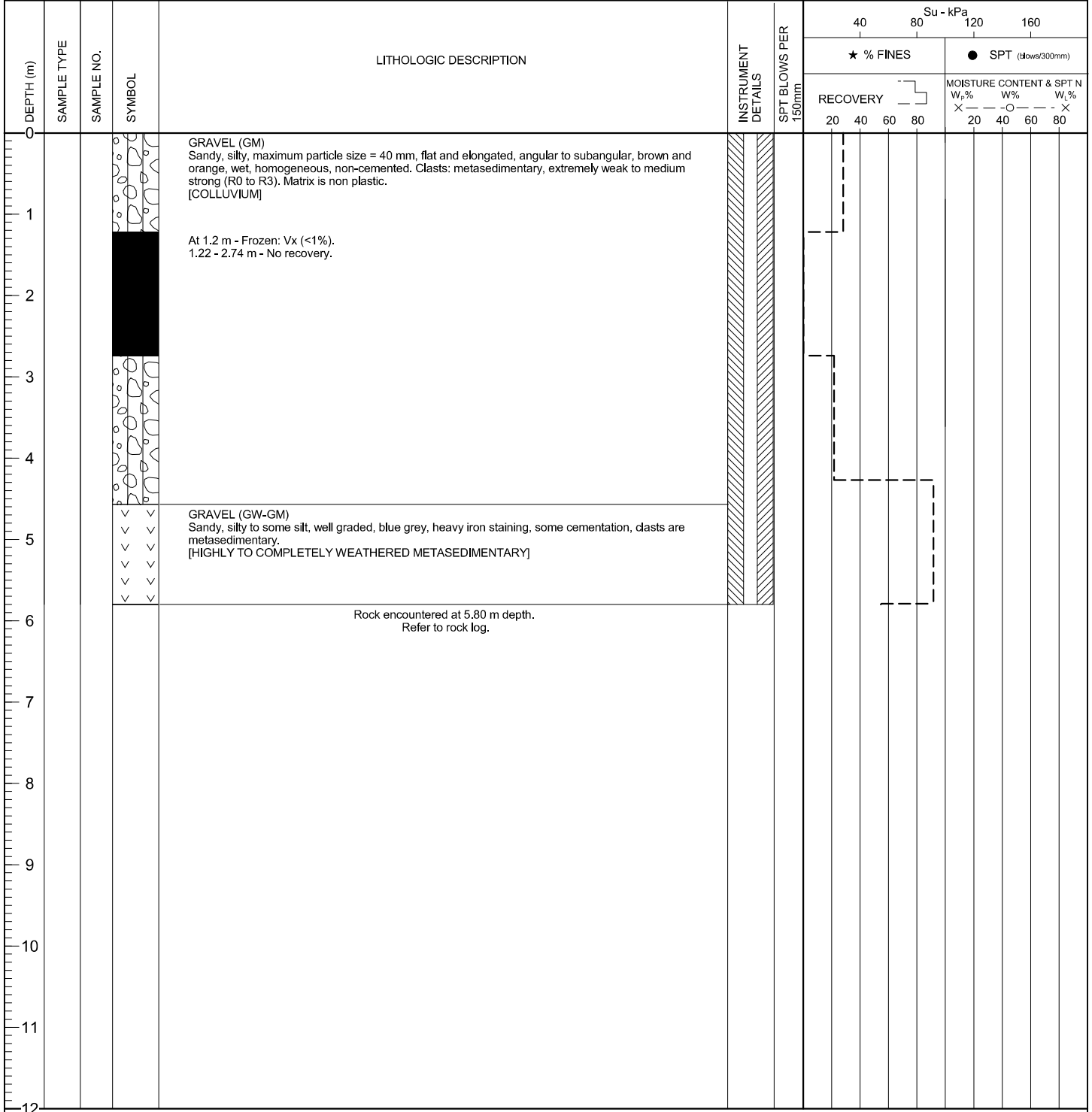
FLUID : Water/Polymer

LOGGED BY : [REDACTED]

TREND (°) : N/A

CASED TO (m) : 5.79

REVIEWED BY : [REDACTED]



EGP (SOL), EGP_SOIL.GDL BGC.GDT 12/20/12

PROJECT NO.: ██████████

LOCATION : ANN GULCH

CO-ORDINATES (m) 459,113.1E - 7,101,239.4N
 GROUND ELEVATION (m) : 883.7m
 SURVEY METHOD : DGPS
 DATUM : UTM NAD 83
 PLUNGE (°) : -90
 TREND (°) : n/a

DRILL DESIGNATION : CS-1000
 DRILLING CONTRACTOR : Lyncorp
 DRILL METHOD : Rotary Diamond
 CORE SIZE : HQ3
 FLUID : Water/Polymer
 CASSED TO (m): 5.79

START DATE : 10 Aug 11
 FINISH DATE : 11 Aug 11
 FINAL DEPTH (m) : 30.2
 DEPTH TO TOP OF ROCK (m) : 5.8
 LOGGED BY : ██████████
 REVIEWED BY : ██████████

DEPTH (m)	INSTRUMENT DETAILS	SYMBOL	CORE DESCRIPTION	CORE RECOVERY %		WEATHERING GRADE	POINT LOAD INDEX					FRACTURE FREQUENCY (FF/M)	Average Joint Condition (Jc)	RMR	DEPTH (m)											
				CORE RECOVERY %	RQD %		I ₅₀ (MPa)																			
				20	40	60	80	1	2	3	4	5	20	40	60	80	5	10	15	20	20	40	60	80		
0																										
1																										
2																										
3			0 to 5.80 m - See BH-BGC11-59 soil log.																							
4																										
5																										
6		✓	METASEDIMENTARY ROCK Brown-greyish, very weak to weak (R1.5 to R2), moderately to highly weathered (W3 to W4), foliated, fine grained, 2 joint sets: first set along foliation 70° from core axis, second set is 30° from core axis, hematite staining in joints and smooth and planar joint surfaces. 6.25 - 6.7 m - Highly fractured zone.																							
7		✓	METASEDIMENTARY ROCK Grey, weak (R2), slightly to moderately weathered (W2 to W3), foliated, fine grained, 2 joint sets: first set along foliation is approximately 70° from core axis, second set is approximately 35-45° from core axis, hematite infill, JRC 10-12.																							
8		✓																								
9		✓																								
10		✓																								
11		✓																								
12		✓																								

(CONTINUED ON NEXT PAGE)

ESP (ROCK) EGP_ROCK.GDL BGC.GDT 1/20/12

PROJECT NO. [REDACTED]

LOCATION : ANN GULCH

CO-ORDINATES (m) 459,113.1E - 7,101,239.4N

DRILL DESIGNATION : CS-1000

START DATE : 10 Aug 11

GROUND ELEVATION (m) : 883.7m

DRILLING CONTRACTOR : Lyncorp

FINISH DATE : 11 Aug 11

SURVEY METHOD : DGPS

DRILL METHOD : Rotary Diamond

FINAL DEPTH (m) : 30.2

DATUM : UTM NAD 83

CORE SIZE : HQ3

DEPTH TO TOP OF ROCK (m) : 5.8

PLUNGE (°) : -90

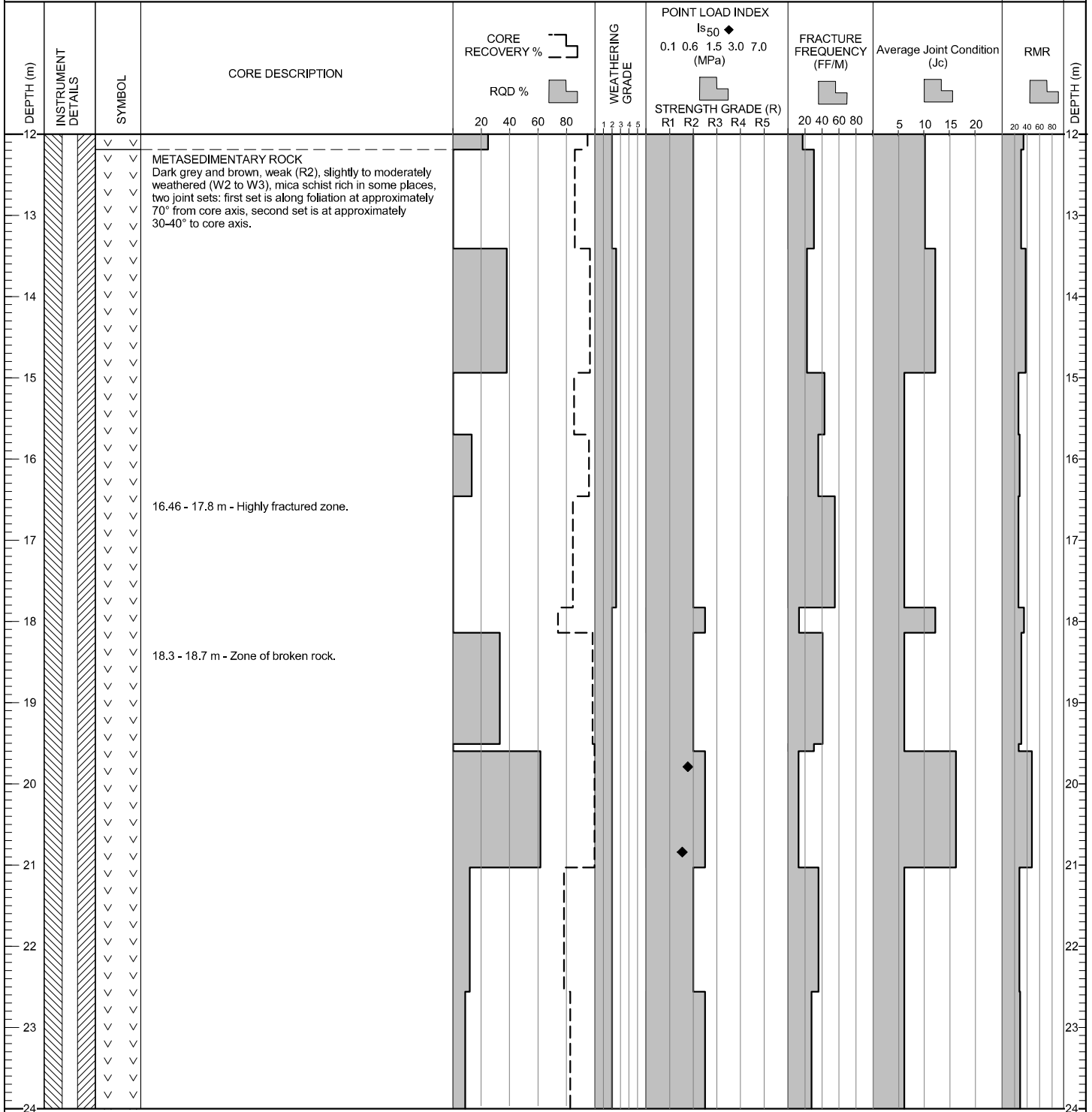
FLUID : Water/Polymer

LOGGED BY : [REDACTED]

TREND (°) : n/a

CASED TO (m): 5.79

REVIEWED BY : [REDACTED]



(CONTINUED ON NEXT PAGE)

ESP (ROCK) ESP_ROCK.GDL BGC.GDT 1/20/12

PROJECT NO. [REDACTED]

LOCATION : ANN GULCH

CO-ORDINATES (m) 459,113.1E - 7,101,239.4N

DRILL DESIGNATION : CS-1000

START DATE : 10 Aug 11

GROUND ELEVATION (m) : 883.7m

DRILLING CONTRACTOR : Lyncorp

FINISH DATE : 11 Aug 11

SURVEY METHOD : DGPS

DRILL METHOD : Rotary Diamond

FINAL DEPTH (m) : 30.2

DATUM : UTM NAD 83

CORE SIZE : HQ3

DEPTH TO TOP OF ROCK (m) : 5.8

PLUNGE (°) : -90

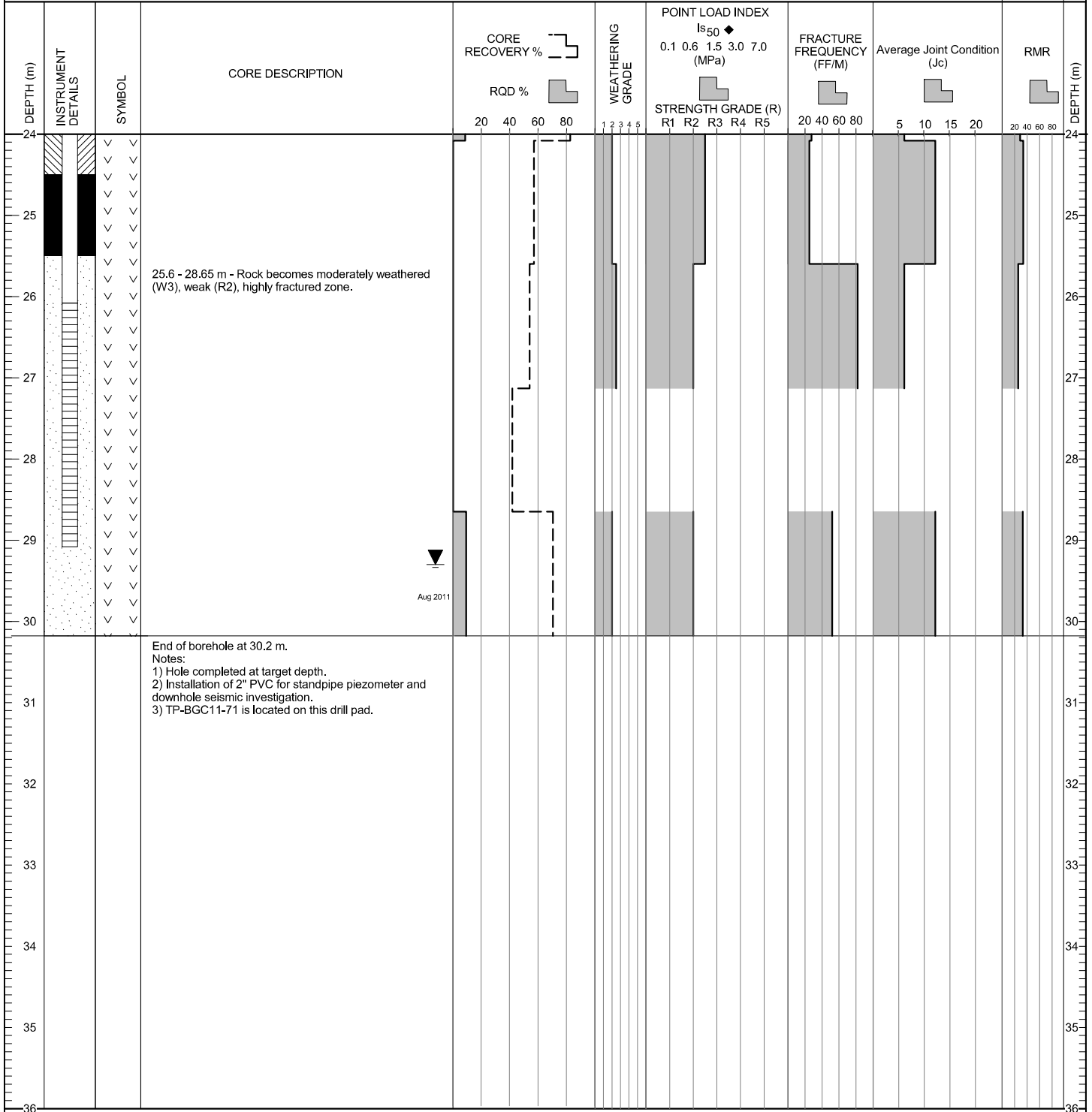
FLUID : Water/Polymer

LOGGED BY : [REDACTED]

TREND (°) : n/a

CASED TO (m): 5.79

REVIEWED BY : [REDACTED]



ESP (ROCK) ESP_ROCK.GDL BGC.GDT 1/20/12