

PROJECT NO. [REDACTED]

LOCATION : EAGLE PUP

CO-ORDINATES (m): 460,360.2E - 7,100,011.1N

DRILL DESIGNATION : CS-1000

START DATE : 15 Aug 11

GROUND ELEVATION (m) : 1,151.9m

DRILLING CONTRACTOR : Lyncorp

FINISH DATE : 16 Aug 11

SURVEY METHOD : DGPS

DRILL METHOD : Rotary Diamond

FINAL DEPTH (m) : 33.5

DATUM : UTM NAD 83

CORE : HQ3

DEPTH TO TOP OF ROCK (m) : 3.9

PLUNGE (°) : -90

FLUID : Water/Polymer

LOGGED BY : [REDACTED]

TREND (°) : N/A

CASED TO (m) :

REVIEWED BY : [REDACTED]

DEPTH (m)	SAMPLE TYPE	SAMPLE NO.	SYMBOL	LITHOLOGIC DESCRIPTION	INSTRUMENT DETAILS	SPT BLOWS PER 150mm	Su - kPa							
							★ % FINES		● SPT (blows/300mm)					
							RECOVERY		MOISTURE CONTENT & SPT N					
							20	40	60	80	20	40	60	80
0				GRAVEL (GW) Cobbly, sandy, some boulders, wet, yellowish brown, homogeneous. Clasts: granodiorite, elongated to equidimensional, angular to subangular, strong to very strong (R4 to R5), fresh to faintly weathered (W1 to W1.5). Frozen: Vx. [COLLUVIUM]										
1														
2														
3				GRAVEL (GW) Sandy, maximum particle size = 50 mm. Clasts: elongated to equidimensional, angular to subangular, moderately weathered granodiorite, very weak to weak (R1 to R2), highly weathered (W4), wet when thawed, yellowish brown, stratified/laminated. Frozen: Vx with visible ice infilling some of the fractures. [HIGHLY TO COMPLETELY WEATHERED ROCK]										
4				Rock encountered at 3.90 m depth. Refer to rock log.										
5														
6														
7														
8														
9														
10														
11														
12														

EGP (SOIL) EGP\_SOIL.GDL BGC.GDT 12/2012



PROJECT NO.: ██████████

LOCATION : EAGLE PUP

CO-ORDINATES (m) 460,360.2E - 7,100,011.1N

DRILL DESIGNATION : CS-1000

GROUND ELEVATION (m) : 1,151.9m

DRILLING CONTRACTOR : Lyncorp

SURVEY METHOD : DGPS

DRILL METHOD : Rotary Diamond

DATUM : UTM NAD 83

CORE SIZE : HQ3

PLUNGE (°) : -90

FLUID : Water/Polymer

TREND (°) : n/a

CASED TO (m):

START DATE : 15 Aug 11

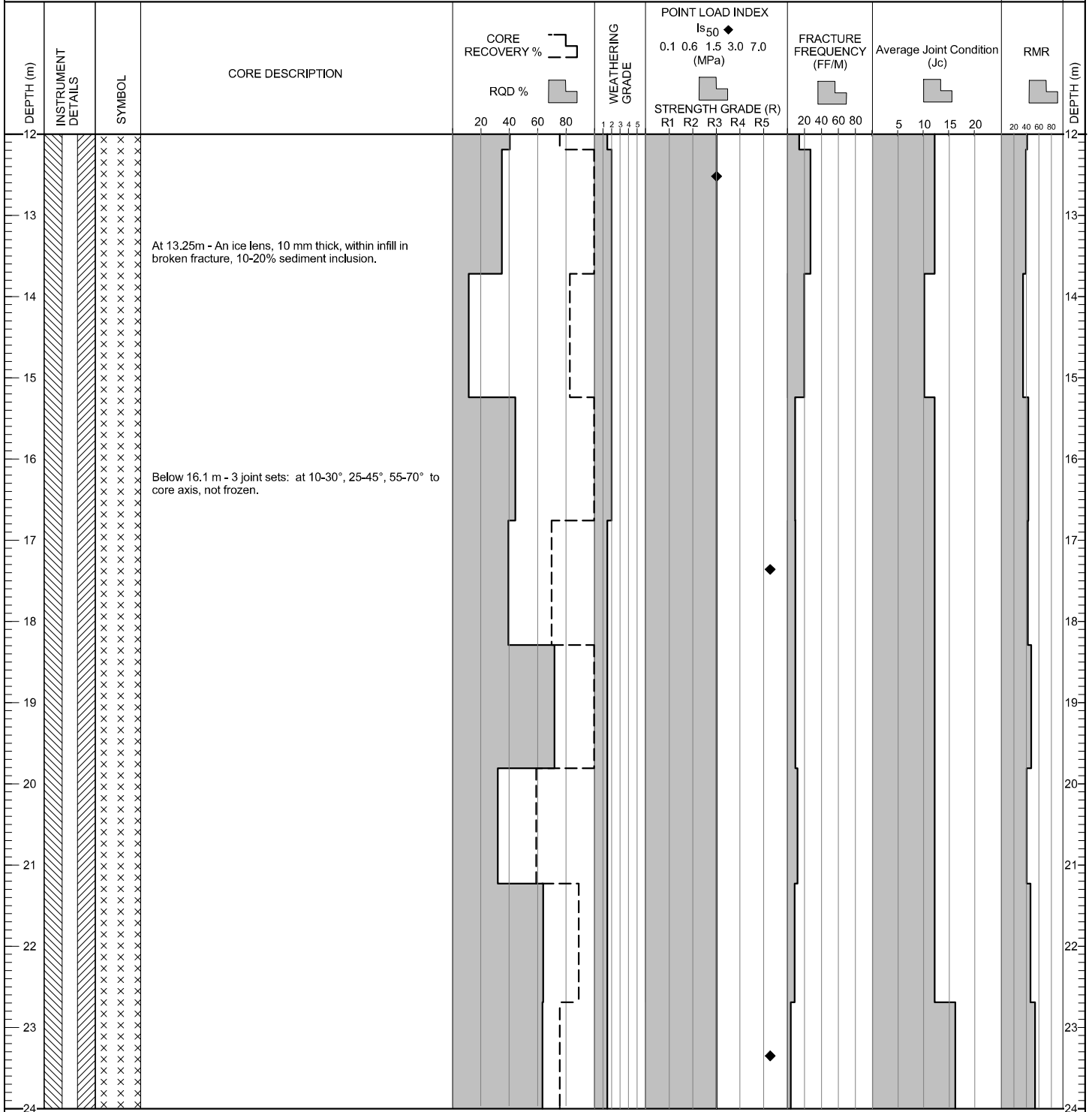
FINISH DATE : 16 Aug 11

FINAL DEPTH (m) : 33.5

DEPTH TO TOP OF ROCK (m) : 3.9

LOGGED BY : ██████████

REVIEWED BY : ██████████



(CONTINUED ON NEXT PAGE)

ESP (ROCK) ESP\_ROCK.GDL BGC.GDT 1/20/12

PROJECT NO. [REDACTED]

LOCATION : EAGLE PUP

CO-ORDINATES (m) 460,360.2E - 7,100,011.1N

DRILL DESIGNATION : CS-1000

START DATE : 15 Aug 11

GROUND ELEVATION (m) : 1,151.9m

DRILLING CONTRACTOR : Lyncorp

FINISH DATE : 16 Aug 11

SURVEY METHOD : DGPS

DRILL METHOD : Rotary Diamond

FINAL DEPTH (m) : 33.5

DATUM : UTM NAD 83

CORE SIZE : HQ3

DEPTH TO TOP OF ROCK (m) : 3.9

PLUNGE (°) : -90

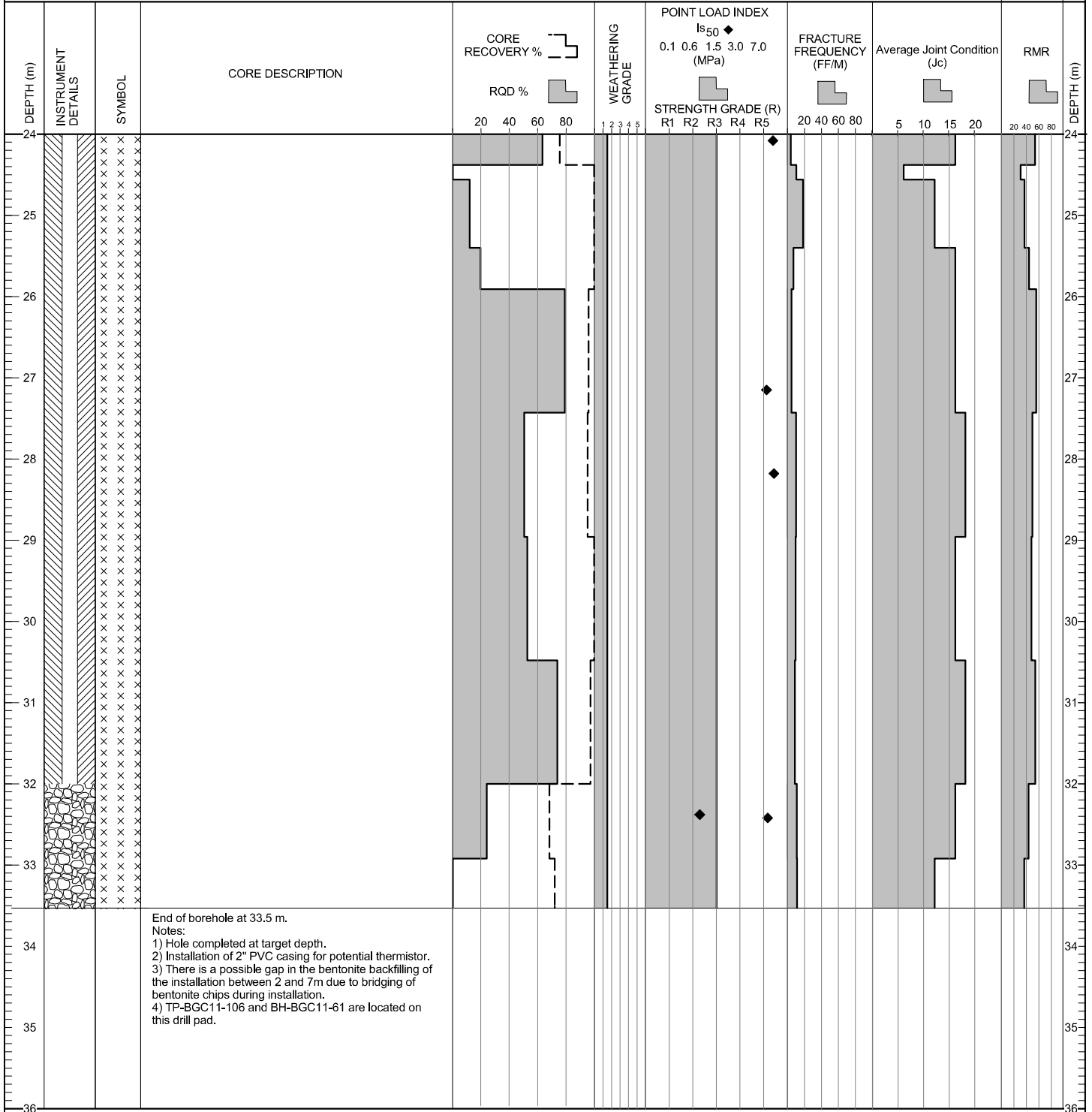
FLUID : Water/Polymer

LOGGED BY : [REDACTED]

TREND (°) : n/a

CASED TO (m):

REVIEWED BY : [REDACTED]



ESP (ROCK) ESP\_ROCK.GDL BGC.GDT 1/20/12