

PRIMARY TREATMENT LAGOONS

DRILL: CME 750

PROJECT NO: [REDACTED]

WHITEHORSE, YUKON

UTM ZONE: 8 N6740845.1 E495089.1

ELEVATION: 678.70 (m)

SAMPLE TYPE

GRAB

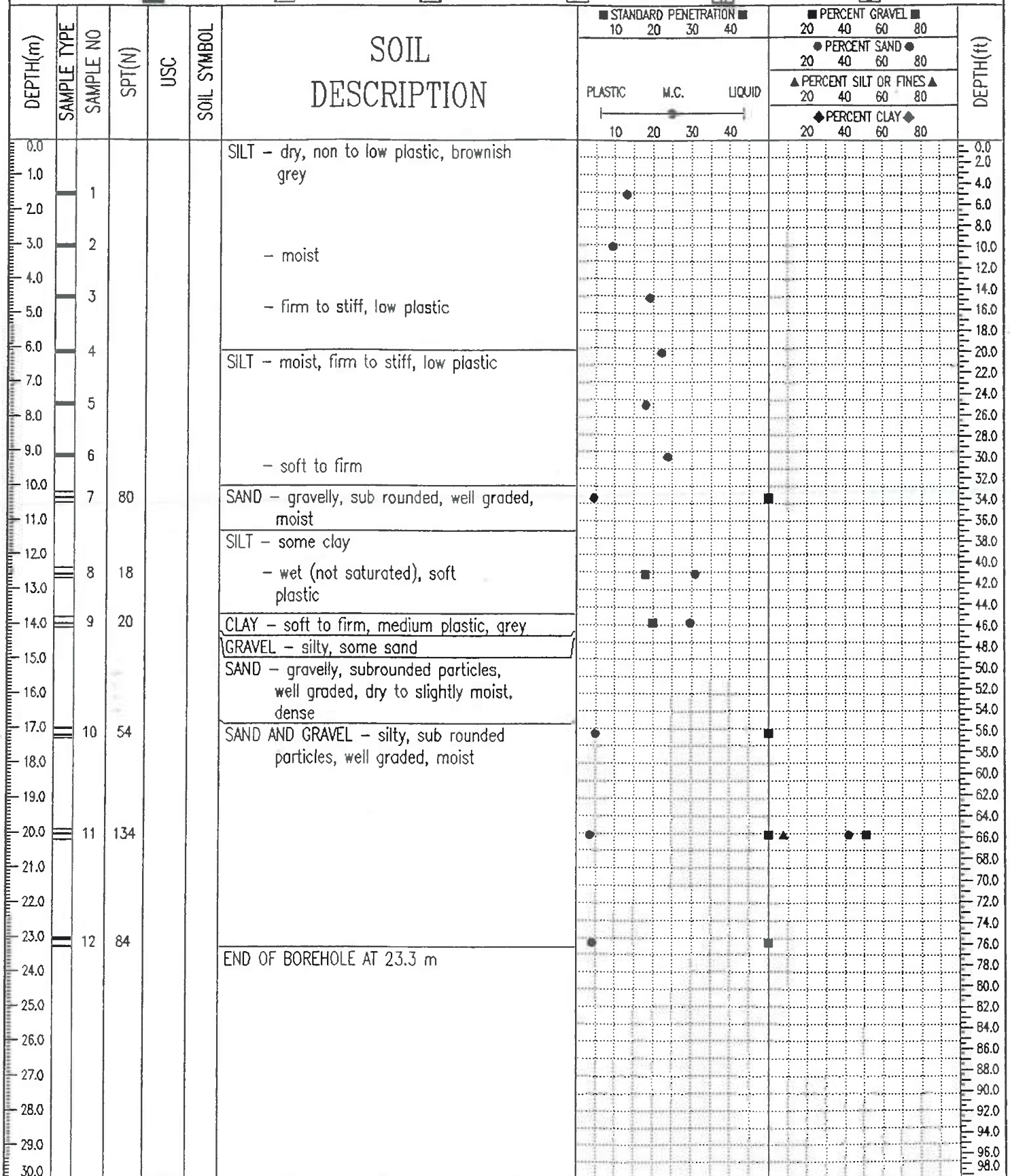
NO RECOVERY

STANDARD PEN.

75 mm SPOON

CORREL BARREL

CORE



EBA Engineering Consultants Ltd.
Whitehorse, Yukon

LOGGED BY: [REDACTED]

REVIEWED BY: [REDACTED]

Fig. No:

COMPLETION DEPTH: 23.3 m

COMPLETE: 95/01/24