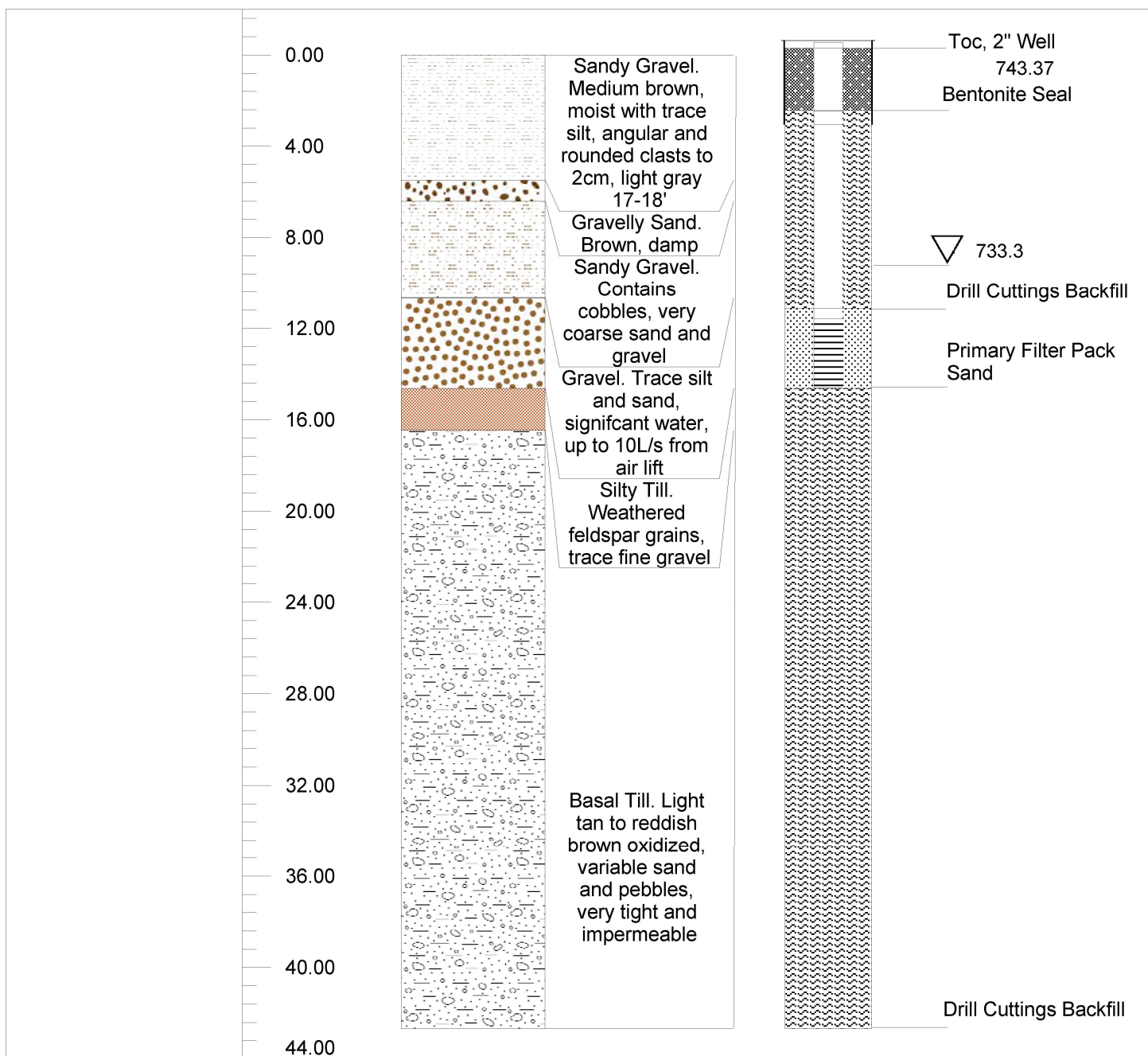


ACCESS CONSULTING GROUP

MW-1013-1	Depth (mbgs)	Lithology	Lithology Discription	Well Construction Design	Components
-----------	--------------	-----------	-----------------------	--------------------------	------------



Drilling Date: October 13, 2011

Company: Cathway Water Resources

Drilling Method: Air Rotary Percussion

Project Name: [REDACTED]

Drill Type: Scham TG5HP

Location: Whitehorse Copper

Easting: 496887.82

Northing: 6724743.60
UTM ZONE 8N

On Site Personnel: [REDACTED]