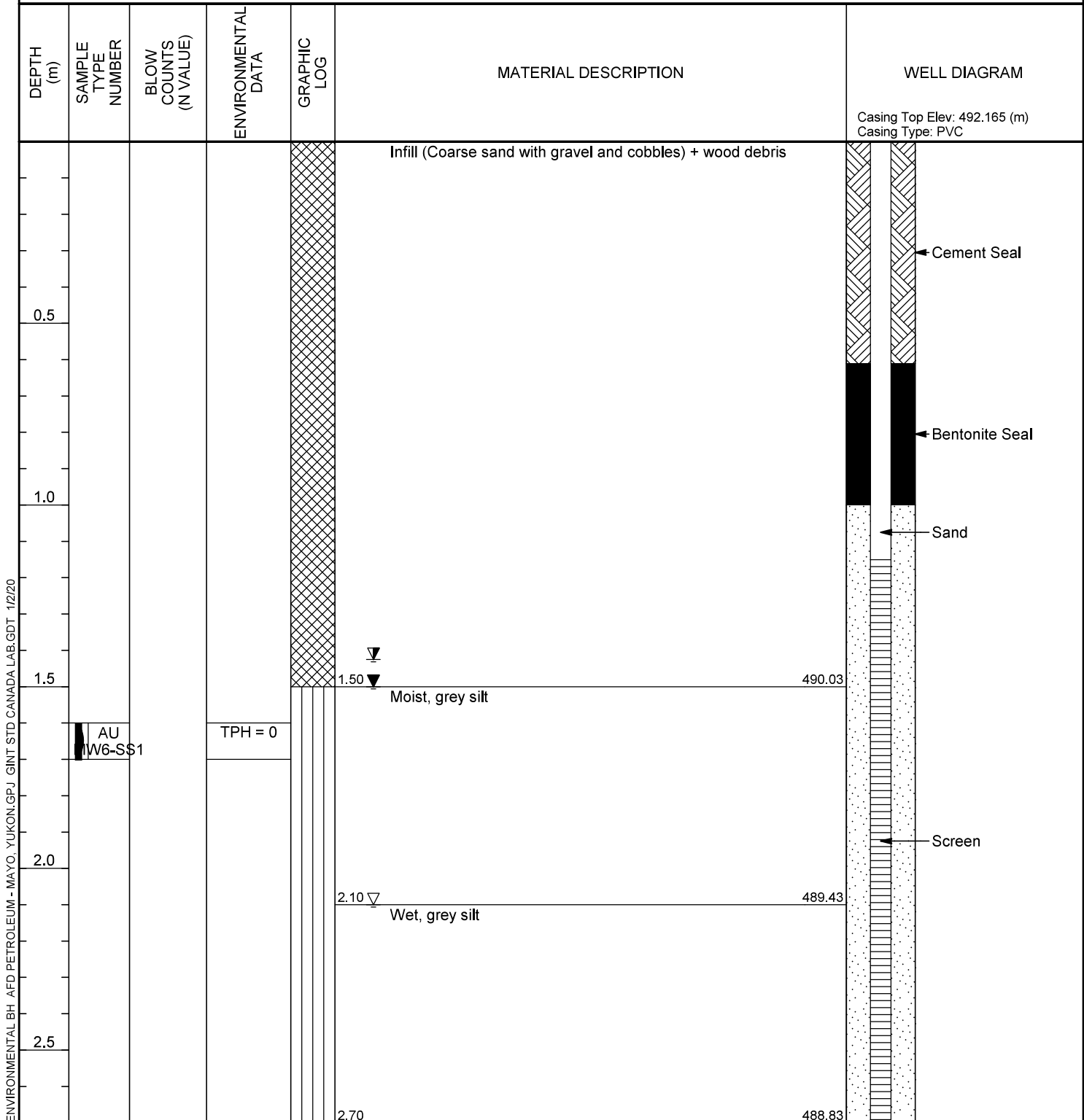


<b>CLIENT</b> <u>AFD Petroleum</u>	<b>PROJECT NAME</b> <u>AFD Petroleum Station - Mayo</u>
<b>PROJECT NUMBER</b> <u>9785 6030 8219</u>	<b>PROJECT LOCATION</b> <u>Mayo, Yukon</u>
<b>DATE STARTED</b> <u>11/15/19</u> <b>COMPLETED</b> <u>11/15/19</u>	<b>GROUND ELEVATION</b> <u>491.533 m</u> <b>HOLE SIZE</b> <u>20.3 cm.</u>
<b>DRILLING CONTRACTOR</b> <u>Midnight Sun Drilling</u>	<b>GROUND WATER LEVELS:</b>
<b>DRILLING METHOD</b> <u>SSA / HSA</u>	▽ <b>AT TIME OF DRILLING</b> <u>2.10 m / Elev 489.43 m</u>
<b>LOGGED BY</b> <u>FS/CD</u> <b>CHECKED BY</b> <u>R.F.</u>	▼ <b>AT END OF DRILLING</b> <u>1.50 m / Elev 490.03 m</u>
<b>NOTES</b> <u>Northwest of Excavation</u>	▼ <b>24hrs AFTER DRILLING</b> <u>1.43 m / Elev 490.11 m</u>



ENVIRONMENTAL BH - AFD PETROLEUM - MAYO, YUKON.GPJ GINT STD CANADA LAB.GDT 1/2/20

Bottom of borehole at 2.70 meters.