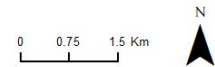
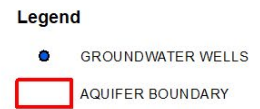
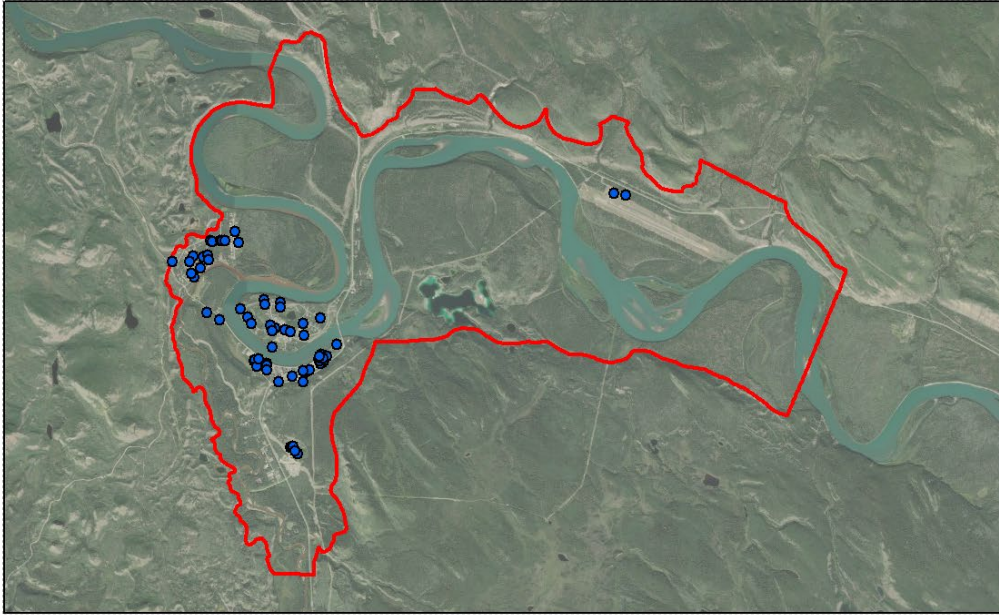


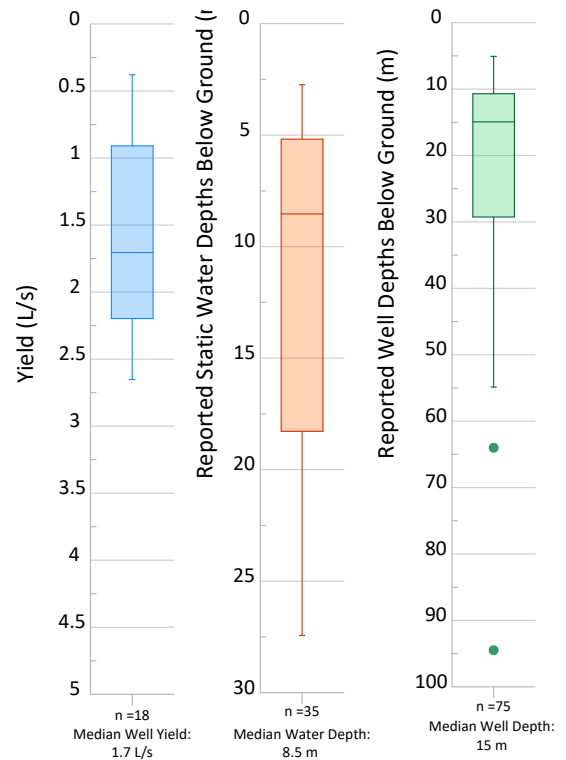
Łots'an Aquifer



Aquifer Description (Mapping Report 2021)

Unconfined aquifer consisting of eolian, glaciolacustrine and/or fluvial sand deposits. The aquifer is exposed in the glacial terraces lining much of the valley sides in the region and is hydraulically connected to the overlying Chu Íntthi Aquifer along Tagé Cho (the Yukon River) and Tsáwnjik Tagé (the Nordenskiöld River).

Aquifer details	
Municipality	Carmacks
Water Management Area	Yukon River (https://legislation.yukon.ca/reg/s/oic2003_058.pdf)
No. wells correlated to aquifer	71
Vulnerability to contamination	High
Productivity	Moderate
Aquifer classification	IIIA
Aquifer sub-type	4a
Hydraulic connectivity	Likely
Water Licences issued for water wells completed in this aquifer	None
Observation wells (Active, Inactive)	YOWN-1925



For more information please contact the Water Resources Branch, Government of Yukon at water.resources@yukon.ca

