

50k CDED & Environment Yukon 30m DEMs Compared

115A01

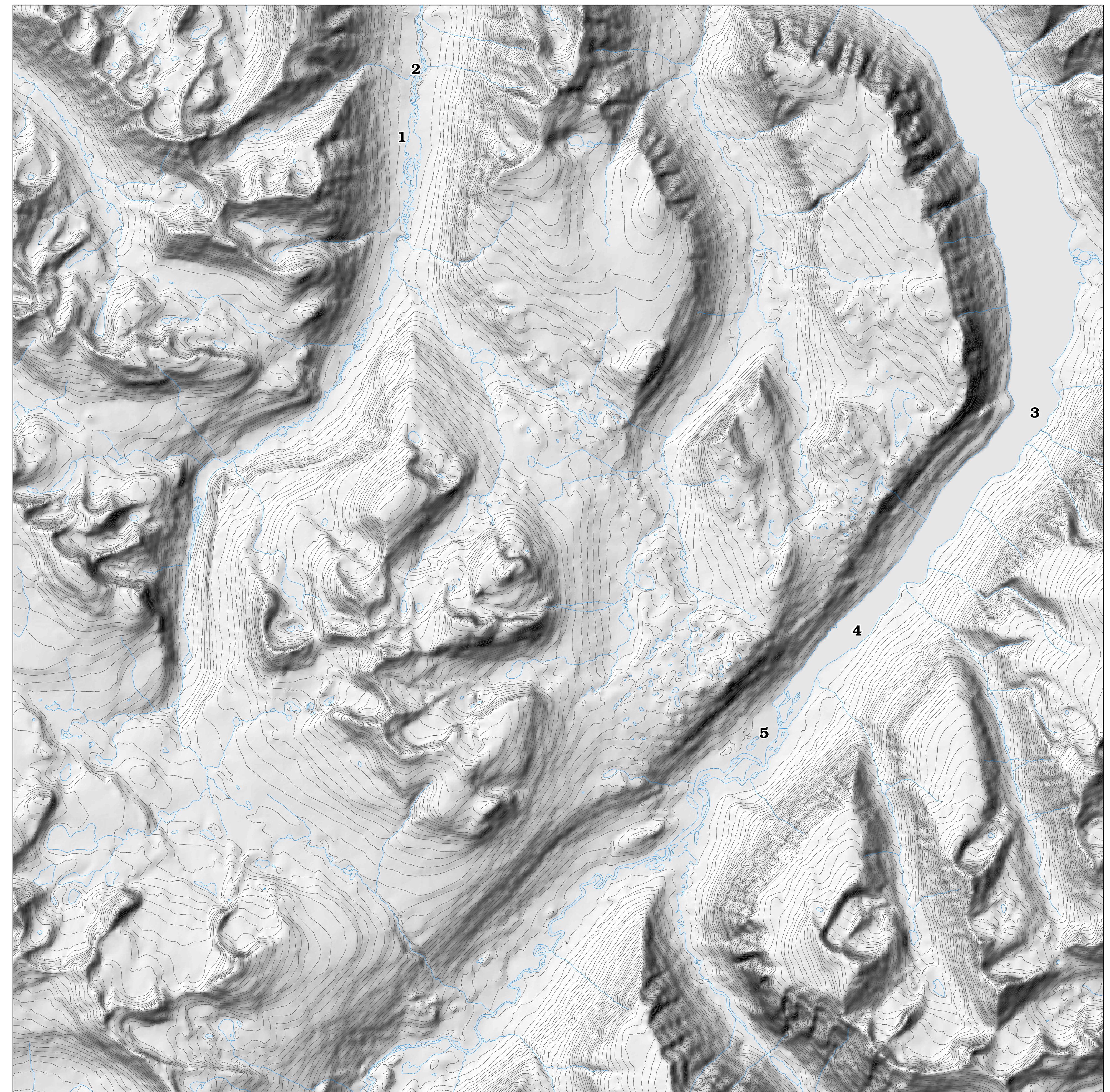
Scale 1:50,000



CDED - NRCAN Canadian Digital Elevation Data



30m DEM - Environment Yukon Digital Elevation Model



In 1999 the Yukon Department of the Environment GIS (then named Renewable Resources GIS) studied the differences between their Digital Elevation Models and those produced by Natural Resources Canada (Canadian Digital Elevation Data or CDED) at the 1:250,000 scale. Our evaluation noted numerous errors and artifacts which were not supported by the underlying source data.

In 2000 NRCAN created CDED at 1:50,000 scale. Our evaluation in 2002 shows no improvement over the 250k product. In fact, in the 50k there are new artifact types in addition to those observed and documented previously in the 250k.

-- M.Wilkie 2002 December 03